



**2023**

**Product**

**Catalogue**

# About Us.

Technical Systems Australia is a leading Australian based company specialising in the supply of Poultry (boilers and breeders), Layer (free range and barn layer), Quail (broiler and breeders), Duck (broiler, breeder and layers), Turkey (breeder and production) and Pig agricultural equipment and spare parts in the Oceania region.



## Our Mission

At Technical Systems Australia, our mission is to be the leading provider of high-quality agricultural spare parts and equipment, supporting farmers and agricultural businesses. We are committed to delivering exceptional products and service that enhance the productivity, efficiency of farms and longevity of equipment.

## Hello From Us

We strive to build strong relationships with our customers, understanding their unique requirements and providing personalized assistance. Our knowledgeable and experienced team is dedicated to offering prompt and reliable customer support, ensuring that farmers have access to the right spare parts when they need them.

# Contents

<b>2</b>	About Us	<b>46</b>	Suspension Hardware
<b>3</b>	Shed Construction	<b>48</b>	Suspension Parts
<b>6</b>	Plasson Poultry Feeders	<b>50</b>	Pulleys
<b>7</b>	Big Dutchman Feeders	<b>51</b>	Tools
<b>8</b>	TSA EzyPan Feeders	<b>52</b>	Evaporative Cooling Pads
<b>9</b>	Water on Demand	<b>54</b>	Fogging Nozzles and Accessories
<b>10</b>	Plasson Broiler Drinkers	<b>56</b>	EZY Fogger Pipe Low Pressure (300psi)
<b>12</b>	Plasson Turkey Drinkers	<b>57</b>	EZY Fogger Pipe High Pressure (1000psi)
<b>14</b>	Roxell FlexAuger (55)	<b>58</b>	Filter Housings and Cartridges
<b>16</b>	Roxell FlexAuger (75)	<b>60</b>	Dosing Pumps and Accessories
<b>18</b>	Roxell FlexAuger (90)	<b>61</b>	Pressure Washers
<b>20</b>	Big Dutchman FlexVey 75	<b>62</b>	L.B White Heating
<b>22</b>	Big Dutchman FlexVey 90	<b>64</b>	Hired Hand Heaters
<b>24</b>	Feed Line Items	<b>66</b>	Sunbird Lighting
<b>26</b>	Lubing	<b>67</b>	LED Lighting
<b>27</b>	Big Dutchman - Lubing	<b>68</b>	Coolair Fans
<b>28</b>	Plasson Water Nipples	<b>70</b>	Euro Fans
<b>30</b>	Plasson Water Nipples	<b>72</b>	Motors
<b>32</b>	Flushing Systems	<b>73</b>	Augers
<b>34</b>	Rotem Platinum Plus	<b>73</b>	Gearboxes
<b>36</b>	Rotem Poultry Control	<b>74</b>	Minimum Ventilation
<b>38</b>	Rotem Communicator	<b>75</b>	Miscellaneous
<b>40</b>	Rotem Spare Parts	<b>76</b>	Contact Us
<b>42</b>	Rotem Smart A&C		
<b>43</b>	Rotem Back Up		
<b>44</b>	Winches		



# Shed Construction



As the Australian representative, TSA is able to help design and build top-of-the-line poultry houses for clients throughout Australasia.

Agrotop is a global leader in Poultry turnkey projects, offering comprehensive services for poultry and agro-industry construction. They provide the full range of services for realizing Poultry and agro-industry construction projects, integrate engineering, construction, know-how, and technology to deliver customized solutions to clients, whilst focusing on client's visions and maximizing their business results.

## Business Orientated

Sheds built in over 40 countries means Agrotop has experience integrating all aspects required to reach perfect bird conditions and

## Micro-Climate

Agrotop's modern houses create a suitable micro-climate in different and even extreme weather conditions.

## Dry Litter

They offer innovative solutions for creating dry litter, which increases the flocks' health conditions and reduces energy costs.



AGROTOP IS A LEADING GLOBAL PLAYER IN LIVESTOCK TURNKEY PROJECTS



# Plasson Poultry Feeders



# Big Dutchman Feeders



**Manual Flood Feed Pan**

02310157



**Auto Flood Feed Pan**

02310159



**Fluxx 5 Arm Feed Pans**

Available in Deep or Shallow pan



**Fluxx 14 Arm Feed Pans**

Available in Deep or Shallow pan



**Low Regulator - Feed Pan**



**Feed Pan Locker**



**Cone**

02310108



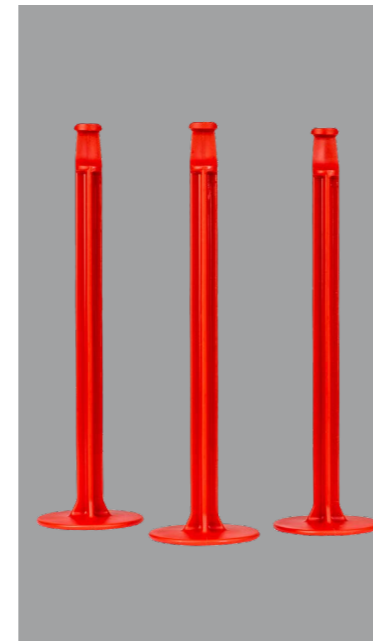
**Feed Pan Body**

02310153



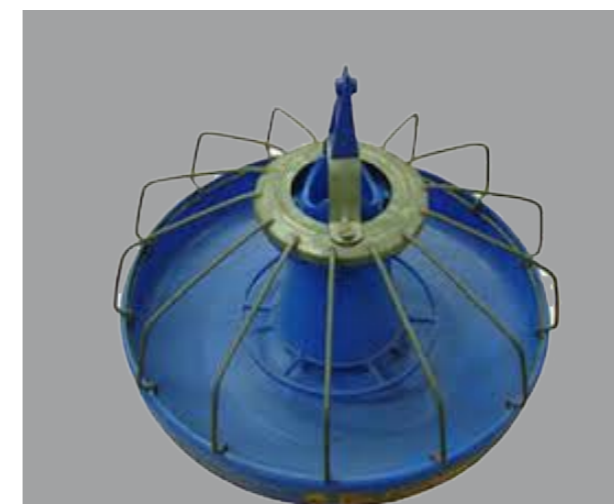
**Pan Pillar - Auto Feed**

02310098



**14 Wire Blue Feeder Pan**

14" Size



**Fluxx 5 and 14 Spare Parts**

- Tube Adaptor
- Cylinder Outer
- Cylinder Inner
- Grille
- Shallow Dish Pan
- Deep Dish Pan
- Shallow Control Pan
- Deep Control Pan
- Proximity Switch
- 1500mm Protect Hose for Sensor



# TSA EzyPan Feeders

# Water on Demand



EzyPan



Pan

00101196

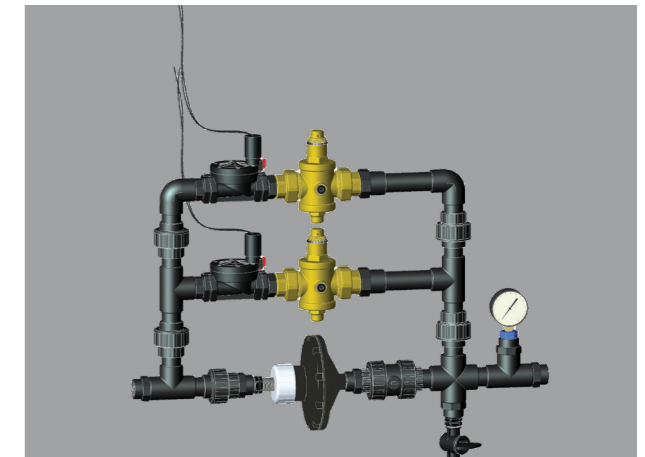


Water on Demand  
Complete Pro  
02205388



Regulator

02205365



Grill Assembly  
00101246



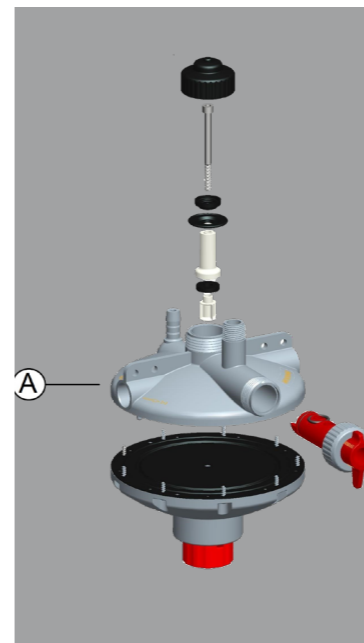
Adjuster Ring  
00101204



Top Support  
00101220  
Support Cone  
00101212



Mid line Pressure  
02205306



Line Head  
02205046



Controller  
02205377



# Plasson Broiler Drinkers



**Ballast Bottle Breeder**  
02102033



**Ballast Bottle Broiler**  
02140003



**SS Nut 1/4"**  
02209018



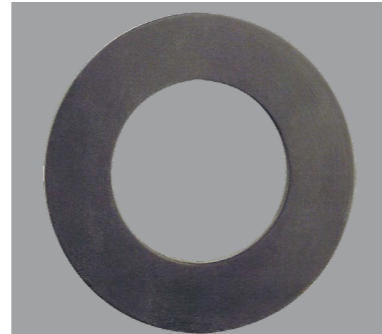
**Valve Housing**  
02210016



**Mechanism Water Level Adjuster**  
02100017



**Washer**  
02140017



**O-Ring Breeder**  
02102038



**Mechanism Body**  
02140013



**Mechanism Complete**  
02102051



**Compact Breeder Drinker Complete with Ballast**  
02106000



**Breeder Drinker Complete with Ballast**

02103250



**Broiler Drinker Complete with Ballast**

02140450



**Water Level Adjuster**  
02140009



**Down Spout**  
02140014



**Ballast Bottle Compact Turkey**  
02140011



**Mechanism Top**  
02140012



**Hanger Rod**  
02140007



**Suspension Clip**  
02209016



**Mechanism Lock Collar**  
02140011



**Hanger Ballast Nut**  
02140008



**1/4" x 10mm (3/8")SS Bolt**  
02209017





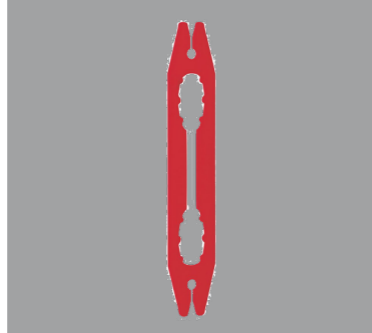
# Plasson Turkey Drinkers



**Saddle Connectort**  
02100030



**Clip Suspension**  
02100044



**O" Ring Valve Assy**  
02100021



**Saddle Connector with Shutoff**  
02100050



**Stainless Steel Spring**  
02140016 | 02106039



**Bottle Hanger Breeder**  
02102041



**Mechanism Pipe**  
02102036



**Union 1/4"**  
02100039



**Regulator 'O' Ring Kit**  
02205719



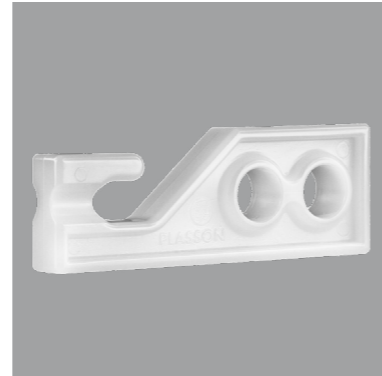
**Valve Assembly Complete**  
02100012



**In-Line Shut-Off**  
02208025



**Cord Adjuster**  
02100010



**Compact Turkey Drinker Complete with Ballast**  
02104005



**Turkey Drinker Complete with Ballast**  
02104350



**Mechanism Filter Cap**  
02102035



**Handle Hook**  
02140018



**Flex Tube 30m Roll**  
02100077



**Washer Support**  
02140015



**Spring Mechanism**  
02102037



**Filter Element**  
02100056



**White Plunger**  
02100007



**Locknut**  
02100015

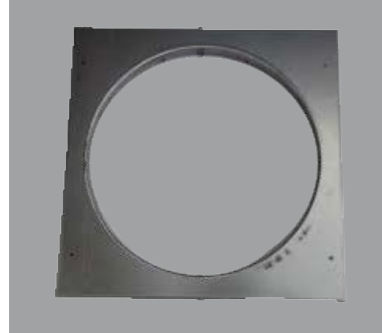


**Mechanism Bell Drinker Mk2**  
02102051



# Roxell FlexAuger (55)

**Universal Collar**  
03102001



**Upper Boot - Black**  
03102076



**Quadruple Boot**  
03102845



**Transfer Plate Assembly**  
03102084



**Pellet Guide FA55**  
03101425



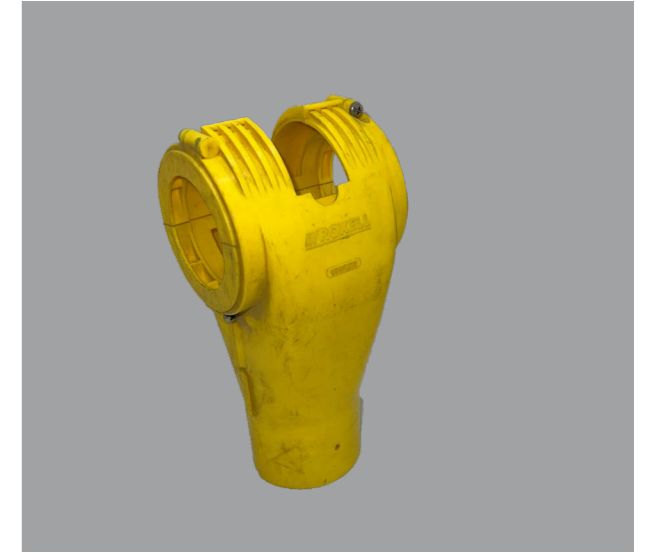
**Input Boot FA55**  
03501061



**Auger 160m roll**  
00100974



**Outlet Drop Half**  
03101300



**Transfer Plate Assembly**  
03102084



**Pellet Guide FA55**  
03101425



**Input Boot FA55**  
03501061



**Insert Half**  
03500220



**Closing Slide**  
03500238



**Hardware Kit incl Slide Rope**  
03101326



**Double Boot FA55**  
03501079



**Extension Boot FA55**  
03501087



**P.V.C Elbow for 55 Auger (40mm PVC)**  
92035545



**Control Unit FA55**  
03500444



**Hopper Level Switch**  
03100864



**Drop Tube Level Switch w/ Delay**  
03100872



**Flex Assembly 85mm Dia. (to suit Control Unit)**  
03100633



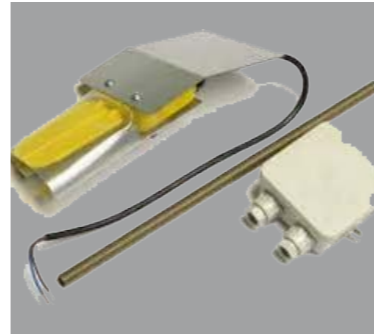
**In-Line Shut-Off**  
02208025



**Outlet Drop Assy w/shut-off Model**  
DROPA055



**Drop Tube Level Switch**  
03101102



**Flex Assembly 65mm**  
05000047



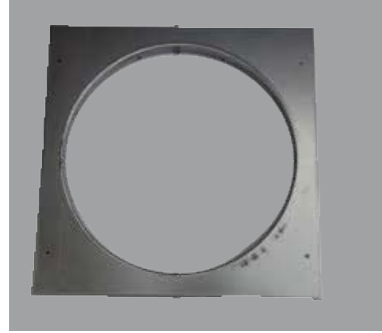
**Joiners, FA55 (03300274)**  
92037510





# Roxell FlexAuger (75)

**Universal Collar**  
3102001



**Upper Boot - Black**  
03102076



**Quadruple Boot**  
03102845



**Transfer Plate Assembly**  
03102084



**Pellet Guide FA75**  
03101425



**Boot FA75**  
03102902



**Double Boot FA75**  
03102928



**Extension Boot FA75**  
03102936



**P.V.C Elbow (65mm PVC)**  
92037545



**Tube Connector dia 75 - 75 (SV) (03101946)**  
92037610



**Automatic Outlet**  
04906962



**Outlet Drop Assy w/shut-off Model 75**  
DROPA075



**Auger 61m roll**  
03100187



**Outlet Drop Half**  
03101300



**Flex Assembly 85mm Dia. (to suit Control Unit)**  
03100633



**Closing Slide**  
03101318



**Hardware Kit incl Slide Rope**  
03101326



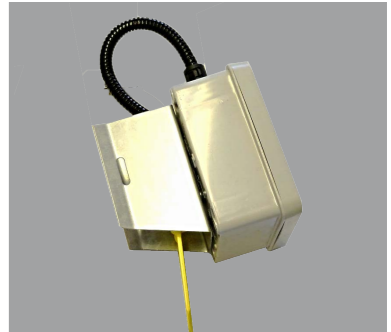
**Flex Assembly 65mm Dia. (to suit DROPA075)**  
05000047



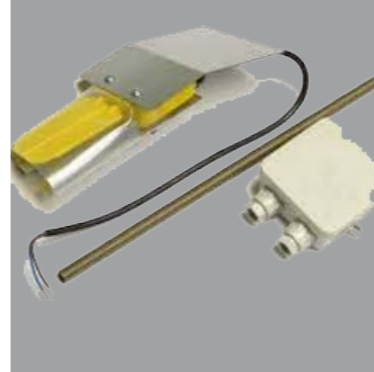
**Hopper Level Switch**  
03100864



**Drop Tube Level Switch w/ Delay**  
03100872



**Drop Tube Level Switch**  
03101102



**Safety Switch**  
1300757

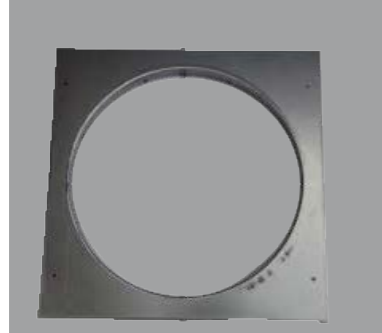


**Control Unit FA75**  
03103256



# Roxell FlexAuger (90)

**Universal Collar**  
3102001



**Upper Boot - Black**  
03102076



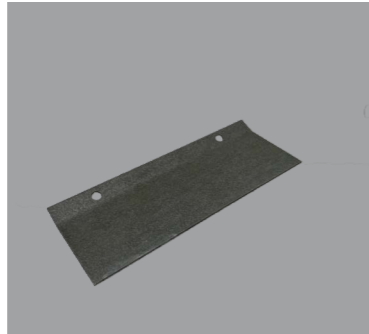
**Quadruple Boot**  
03102845



**Transfer Plate Assembly**  
03102084



**Pellet Guide FA90 (Set RH+LH)**  
03200854



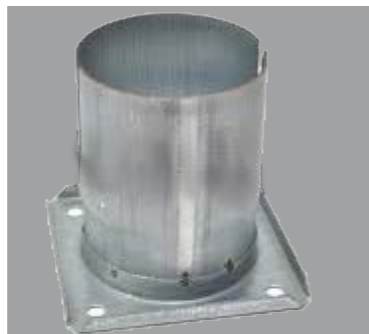
**Boot FA90**  
03201969



**Double Boot FA90**  
03201977



**Tube Anchor Weldment**  
13200308



**P.V.C Elbow for 90 Auger (80mm PVC)**  
92039045



**Outlet Drop Half - Top**  
03200706



**Outlet Drop Half - Bottom**  
03200714



**Outlet Drop Assy w/shut-off Model 90**  
DROPA090



**Auger 61m roll**  
03200409



**Joiners, FA90 (03200383)**  
92037910



**Flex Assembly 85mm**  
03100633



**Closing Slide**  
03200722



**Hardware Kit incl Slide Rope**  
03200730



**Flex Assembly 65mm Dia. (to suit DROPA075)**  
05000047



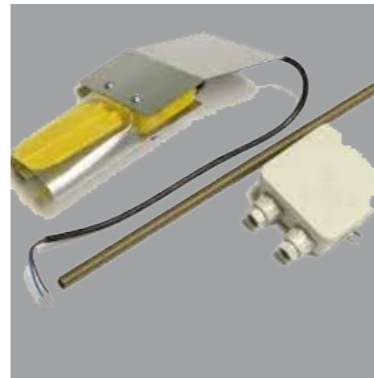
**Hopper Level Switch**  
03100864



**Drop Tube Level Switch w/ Delay**  
03100872



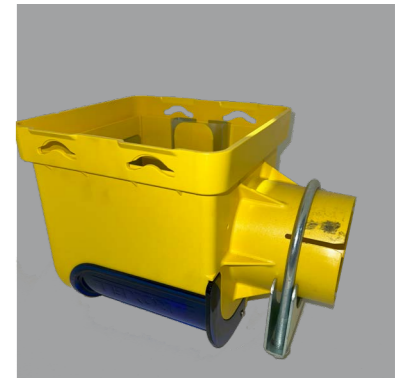
**Drop Tube Level Switch**  
03101102



**Safety Switch**  
13000757



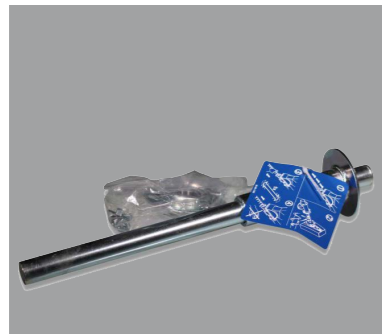
**Control Unit FA90**  
03201050





# Big Dutchman FlexVey 75

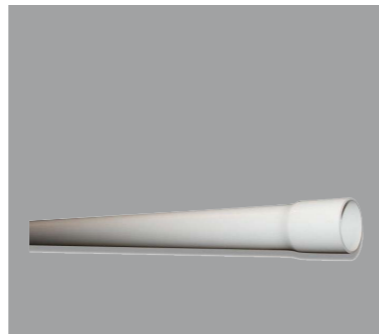
**Tension shaft cpl f/FV**  
83-19-4349



**Clamp f/pipe FlexVey**  
99-50-0475



**Conveying pipe**  
83-03-6810



**Drive head for drive FlexVey**  
25-16-3610



**Tube coupling for convey-  
ing tube**  
25-57-1117



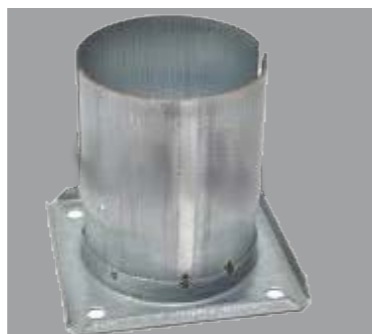
**Mounting set for  
outlet B FlexVey 75**  
25-57-3161



**Housing for outlet B with  
shut-off**  
83-01-6117



**Outlet automatic BD**  
13200308



**Coupling ABS**

83-52-3611



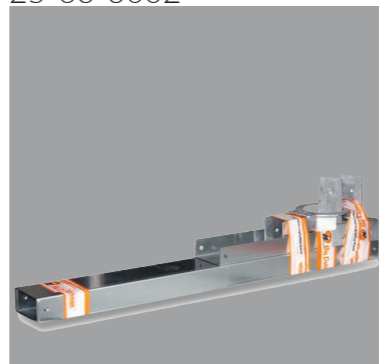
**Adapter for auger**  
25-16-3611



**Drive with v-belt wo/motor**  
25-60-3055

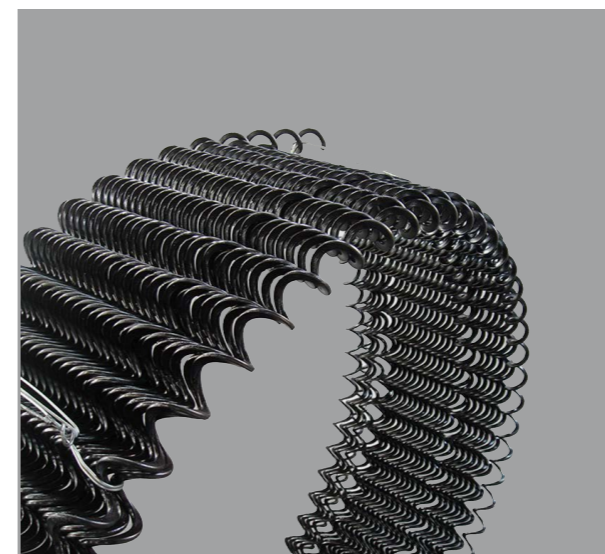


**Support f/lower part boot  
auger rear 1m**  
25-63-3002



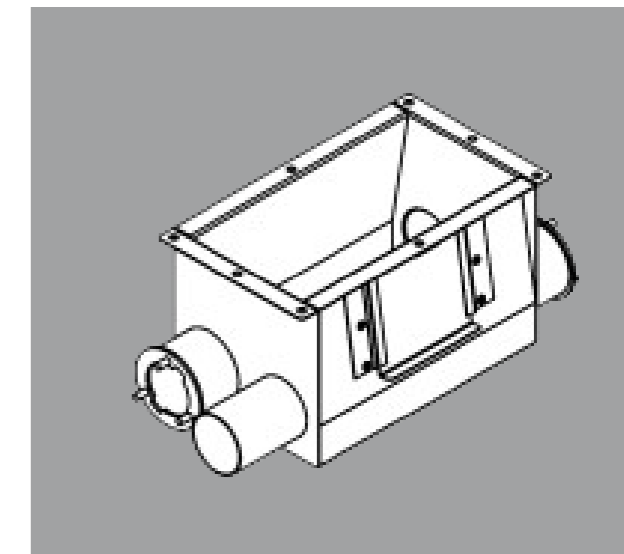
**Auger Roll - Flexvey75**

03200409



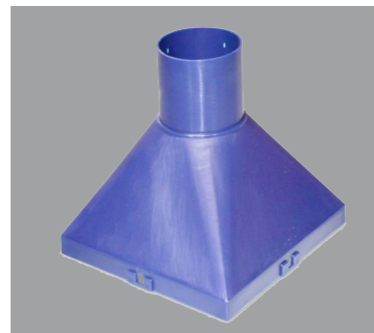
**Lower part for silo boot M 75 2-line  
2 directions**

83-03-8535



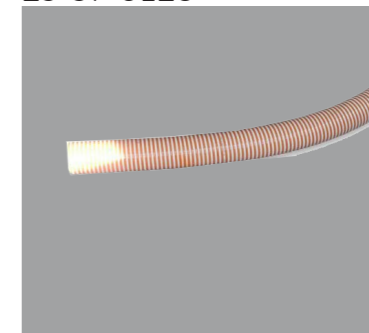
**Discharge hopper for  
outlet automatic**

83-01-7459



**Spiral hose DN 75**

25-57-3128



**Outlet flat w/flange**

83-12-8388

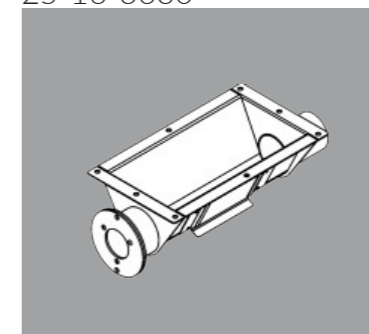


**Holder FlexVey 75**

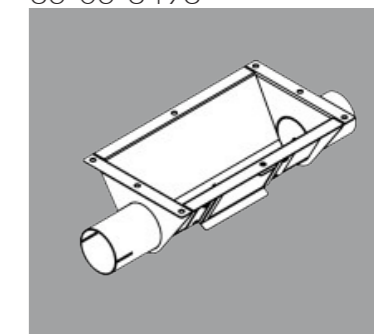
83-51-5106



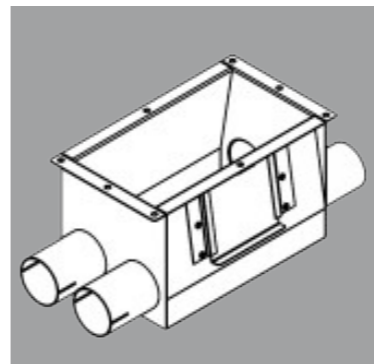
**Lower part for silo boot  
M 75 1-line 1 direction**  
25-16-3630



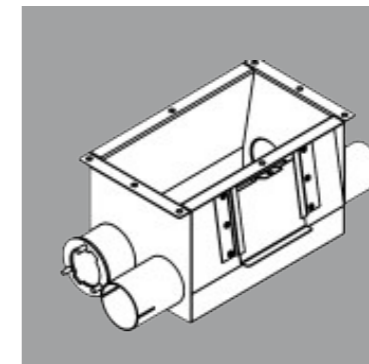
**Lower part for silo boot  
M 75 1tram passing auger**  
83-03-8498



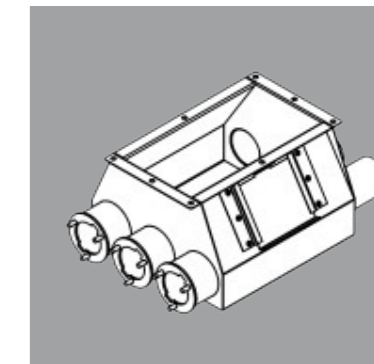
**Lower part for silo  
boot M 75 2lines pass-**  
83-03-8537



**Lower part f/boot f/flex  
2line 1direct. 1tram passing**  
83-03-1321



**Lower part for silo boot M  
75 3-line 1 direction**  
83-03-8545



# Big Dutchman FlexVey 90

**Support for FlexVey**

83-15-8025



**Clamp f/pipe FlexVey**

99-50-0476



**Conveying pipe**

83-03-6811



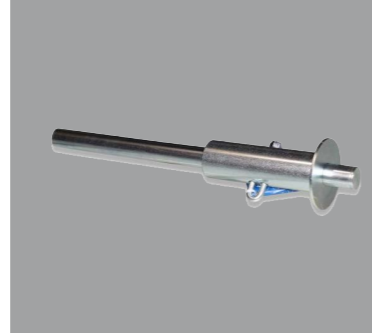
**Drive head for drive FlexVey**

25-16-3610



**Tension shaft cpl f/FV 90**

83-19-4348



**Mounting set for outlet B FlexVey 90**

25-59-3161



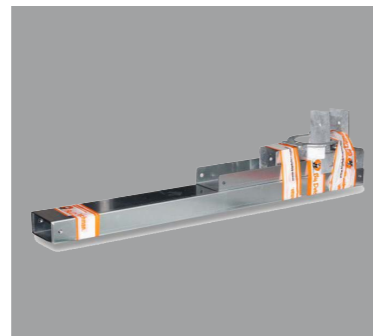
**Housing for outlet B with shut-off**

83-01-6119



**Support f/lower part boot auger rear 1m**

25-63-3002



**Coupling ABS**

83-52-3612



**Adapter for auger**

25-16-3612



**Connecting sleeve**

25-16-3021



**Support for FlexVey90 AMX**

83-08-1764



**Auger roll FlexVey90**

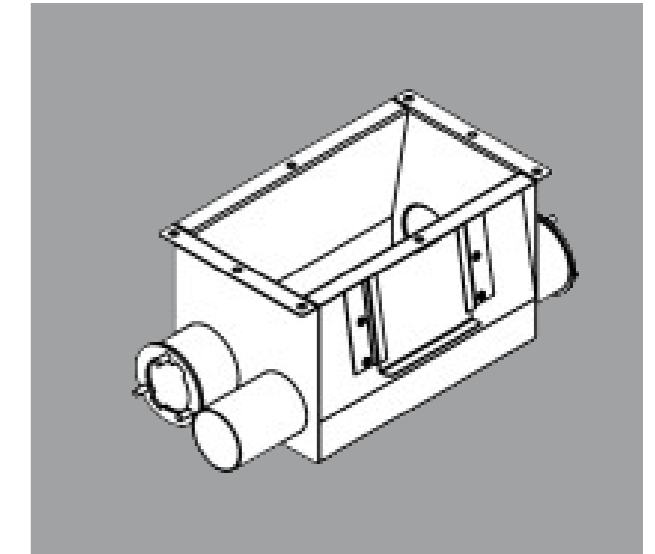
03200409



**Lower part for silo boot M 90 2-line**

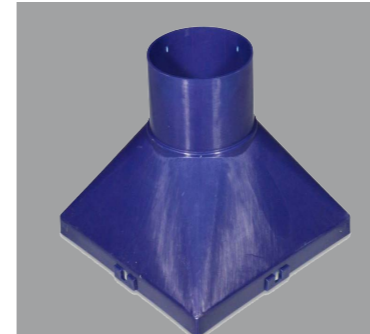
**2 directions**

83-03-1323



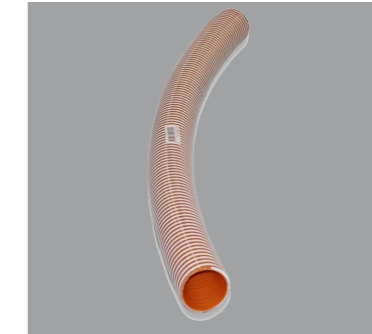
**Discharge hopper for outlet automatic**

25-16-3633



**Spiral hose DN 90**

25-59-3128



**Outlet flat**

83-13-8055



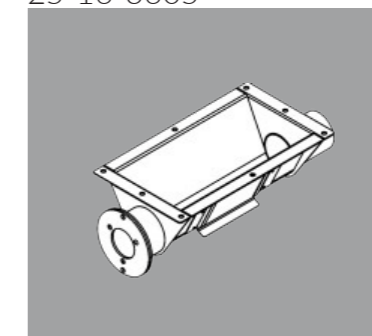
**Support f/lower part boot auger front 1m**

25-63-3003



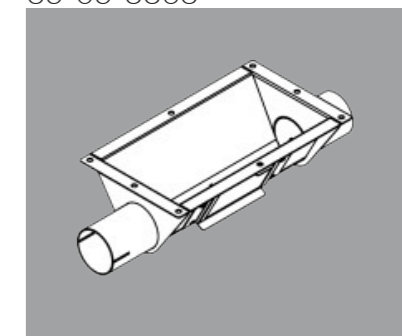
**Lower part for silo boot M90 1-line 1 direction**

25-16-3605



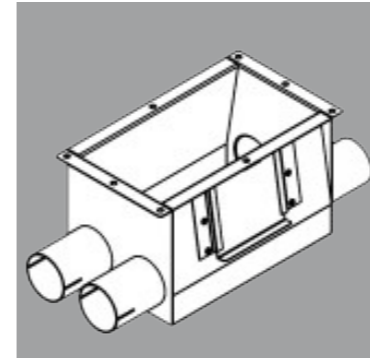
**Lower part for silo boot M90 1tram passing auger**

83-03-8868



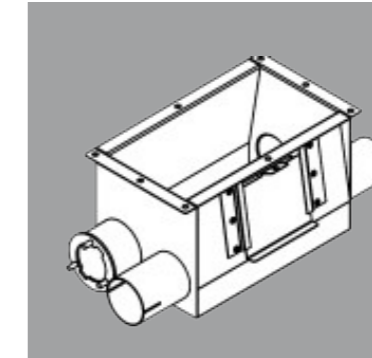
**Lower part for silo boot 2lines passing**

83-03-1325



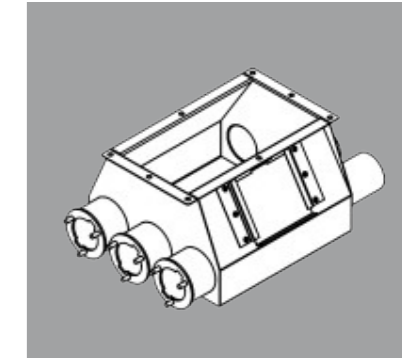
**Lower part f/boot f/flex 2line 1direct. 1tram passing**

83-03-1326



**Lower part for silo boot M 90 3-line 1 direction**

83-03-9197





# Feed Line Items

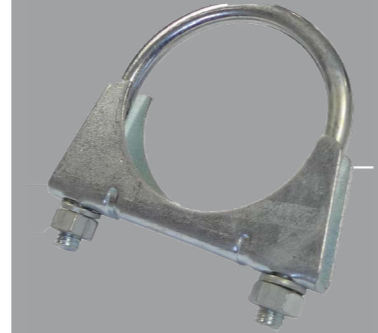
**Big Dutchman Auger Con Assy**  
25-02-1710



**Big Dutchman Arbor Assy**  
11-01-1130



**80mm Pipe Clamp**  
H08000



**DOL 45R**  
60-40-0654



**DOL 26 Sensor**  
60-40-5107



**Big Dutchman Arbor Assy FV90**  
25-16-1202



**Anchor Bearing Assembly FA75**  
13108048



**Anchor Bearing Assembly FA90**  
13202999



**Driver Weldment FA75**  
13105200



**Driver Weldment FA90**  
13201561



**Square to Round Drop FA 75,90**  
13102686



**Yellow Square to Round Drop FA 75,90**  
13102868Y



**Bearing Holder Cap - FA75 PAIR**

13107826



**Bearing Holder Cap - FA90 PAIR**

13202874



# Lubing



RELENTLESS QUALITY. EXCEPTIONAL SERVICE.

Lubing Regulator Yellow

3201-00



Lubing Flush Kit for Ally Profile

4255-00



Lubing Flush Kit for 3/4" Tube

4257-00



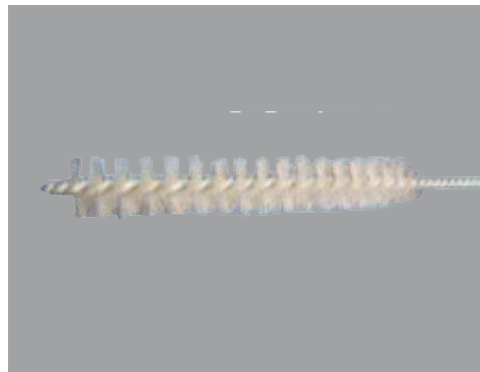
Breather Tube 450mm

3307-00



Cleaning Brush

4285



Lubing 4024 Nipple Yellow 360 Deg

4024-00



Lubing 4022 Nipple Stainless 360 Deg

4022



Lubing Diaphragm Large

030-240-28-00



Lubing Diaphragm Small

030-240-14-00



Flush Bordering Lubing Regulator

030-200-29-00



Lubing Connection PC Yellow

3303-00



Lubing Oringkit

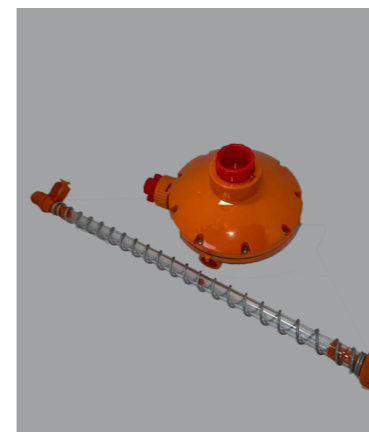
oringkit



## Big Dutchman - Lubing

Lubing Regulator Big Dutchman Orange

30-63-3620



Lubing Joiner

30-00-3025



1 Arm Cup Lubing Big Dutchman Orange

30-61-3497





# Plasson Water Nipples



# PLASSON

**Grey Nipple - Broiler**

02205237



**Orange Nipple - Broiler**

02205041



**Yellow Nipple - Broiler**

02205040



**Tray - Broiler Nipple**

02205001

**Tray - Breeder Nipple**

02205521

**Dark Grey Nipple - Breeder**

02205061



**Brown Nipple - Breeder**

02205012



# Plasson Water Nipples



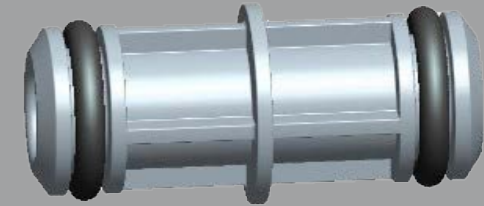
Orange Threaded Nipple

02205358



Grey Threaded Nipple

02205364



Nipple Assembly Tool

02205420



External Connector

02205035

Insert Fitting & Seal

02205122

Seal 15-3.8

02205121

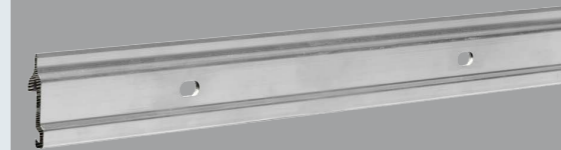
Nipple Pipe - 20 Holes

02205155



Long Alluminum Profile for External Connector

02209024





# Flushing Systems

**Automatic Flushing System**

02205618



**Controller**

02205686



**Mid line Pressure Regulator**

02205750



**MixRite Medicator**

45012502



**Line Head**

02205730



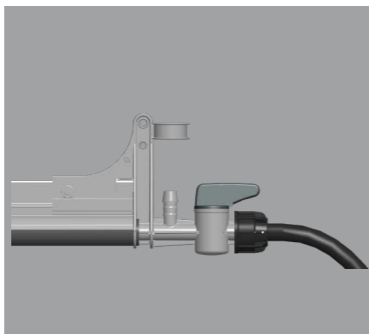
**Sealing Plug for Mid line Pressure**

02205688



**Mid Line Shut Off Valve**

02205769



**Line End Regulator**

02205772



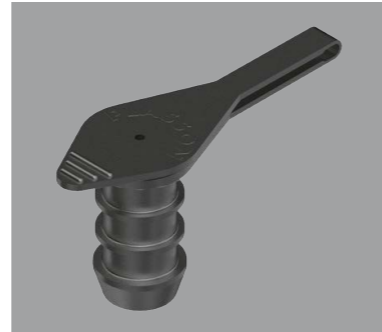
**Peripheral O-Ring for Pressure Regulator**

02205719



**End Plug**

02205429



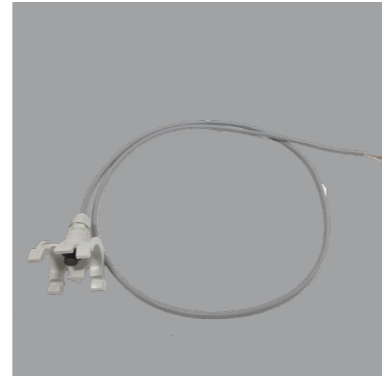
**Flushing Valve**

02205733



**Water Temp Sensor for Flushing System**

02205965



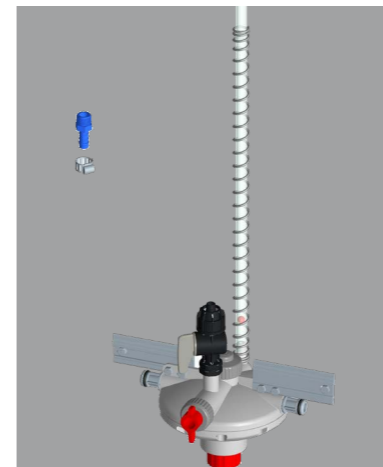
**Mid House Accessories**

02205747



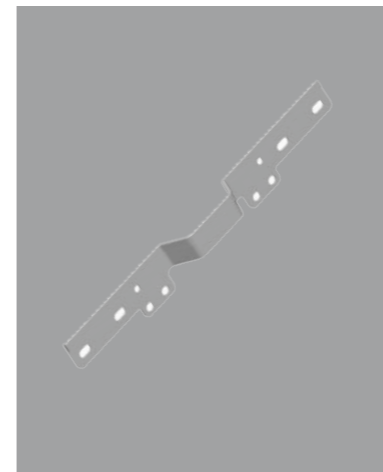
**Mid Houses**

02205751



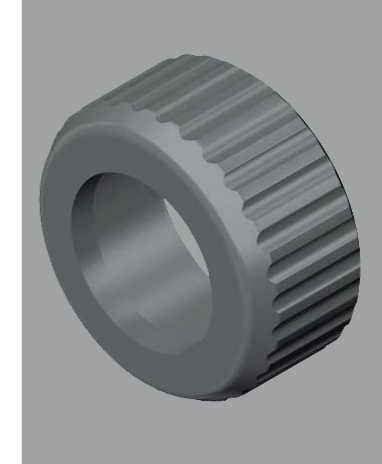
**SS Connector for Mid Line Regulator**

02205032



**Flushing Valve Nut for Pressure Regulator**

02205711



**Inlet O-Ring for Pressure Regulator**

02205711



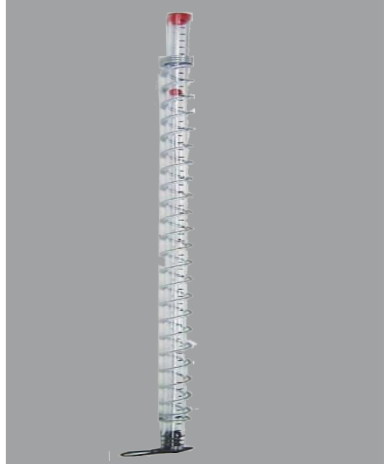
**Air Vent for Nipple**

02205430



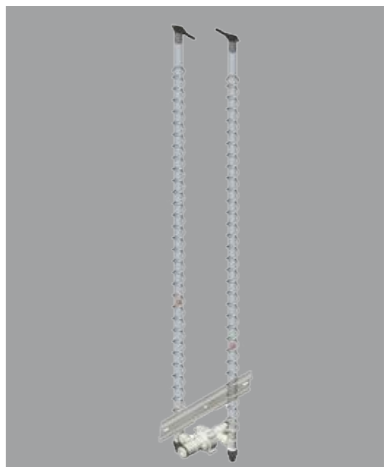
**Pressure Indicator**

02205436



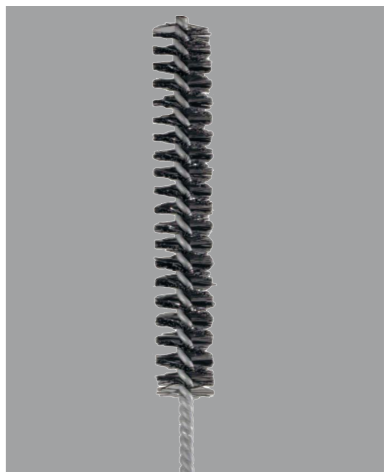
**Pressure Breaker 15cm**

02205095



**Sight Tube Brush**

02205424



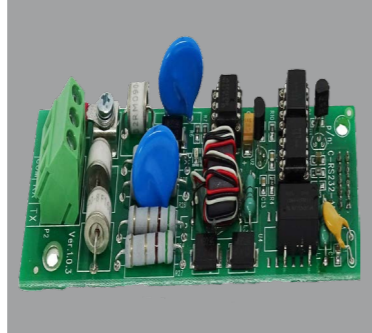
# Rotem Platinum Plus

**ROTEM**<sup>®</sup>  
Control & Management

**Sensor Static Pressure Kit**  
82500090



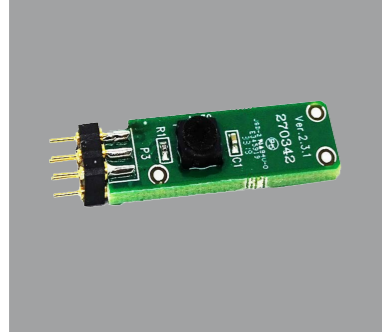
**Normally Open 30A Relay Set**  
82500095



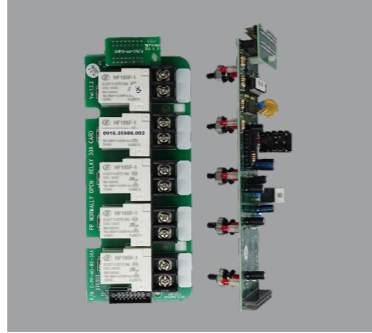
**Gold Data Plug**  
82599404



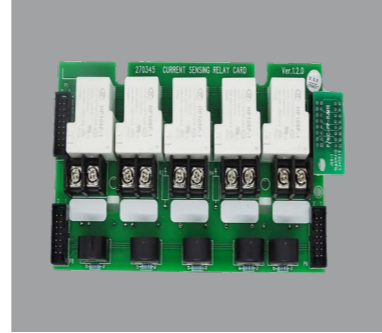
**Humidity Sensor, CHIP**  
85098910



**Communications Card rs232**  
82500091



**PP Current Sensing Relay-Card**  
82531220



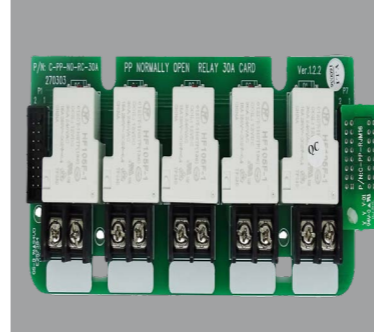
**Platinum Plus Controller Basic**  
82500120



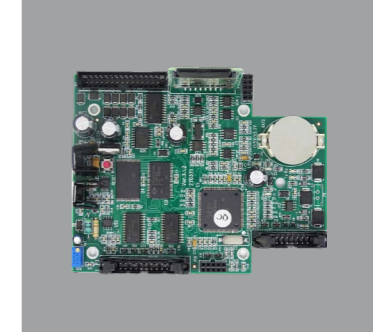
**Platinum Plus XL Controller**  
82500122



**5 Relay Card 30 AMP**  
82500097



**PP ARM CPU Card**  
82531100



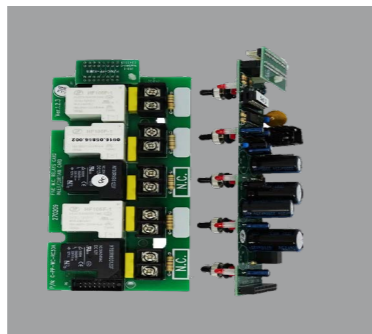
**Input-Output Bus PP**  
82540085



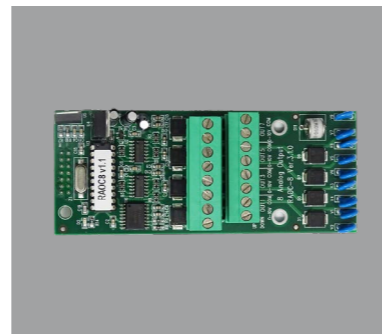
**Humidity Sensor Plus**  
80011102



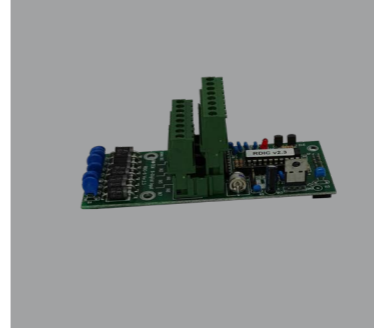
**Winch Switch Card w/ delay**  
82500096



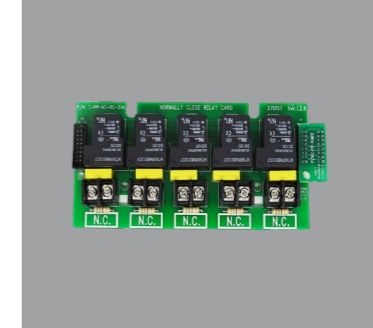
**Analog Output Card**  
82500107



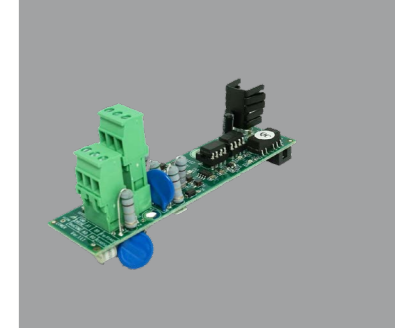
**Digital Inputs Card (8)**  
82500105



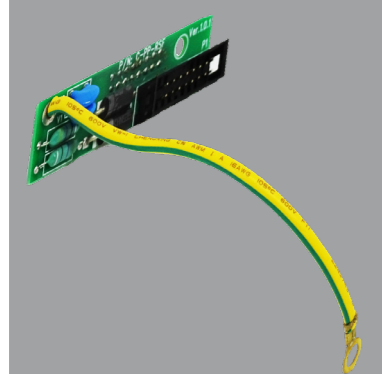
**5 Relay Emergency Card 30A PP**  
82531205



**POU-RS485 ISO Network & 485**  
XXX



**Relay Spark Filter**  
82523100



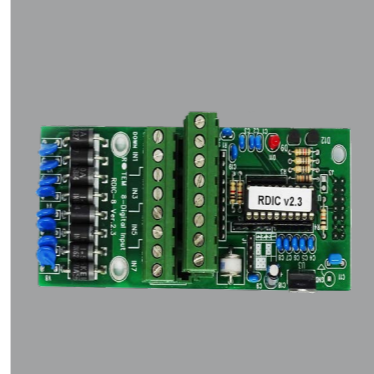
**Winch Relay Card 30A**  
82500100



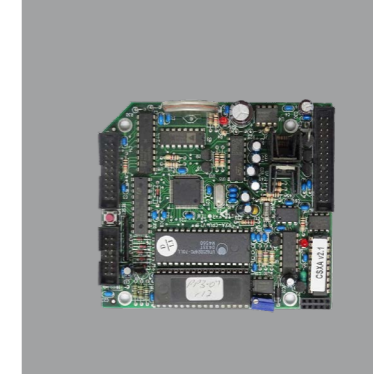
**Normally Close Relay 30A Card**  
82500030



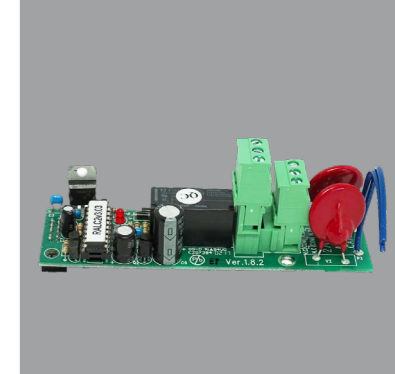
**Analog Inputs Card (11)**  
82500106



**RXA-CPU Card**  
82540090



**POU-Alarm Card**  
82500093





# Rotem Poultry Control

# ROTEM®

Control & Management

**AC2000SE Poultry Control**  
80030120



**AC2000Plus Poultry Control**  
80030120\*\*\*

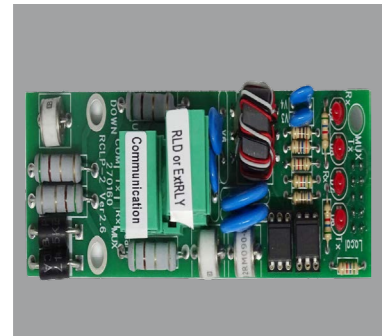


**Rotem One Controller**

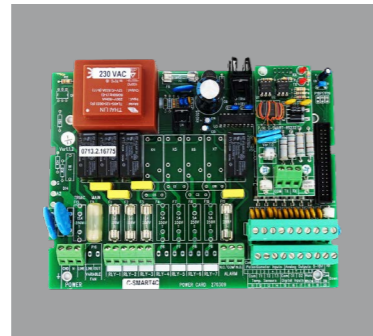
XXXX



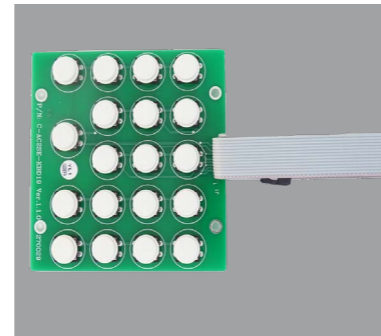
**AC2000 PLUS POU-RS232 Card**  
85031422



**Terminals Card (3)**  
85034503



**POU Keyboard Card AC2000 - KBD19**  
901-99-00018



**RLD-14 Light Dimmer**  
80031570



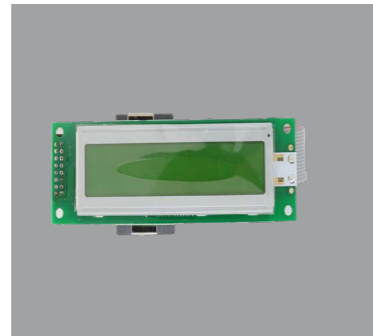
**RDT-5 Digital Thermostat**  
80041902



**Static Pressure Sensor**  
85017901



**AC2000SE Display SP**  
999-99-00130



**AC2000 Power Supply 230v 50/60Hz - RBS -1**  
85041400



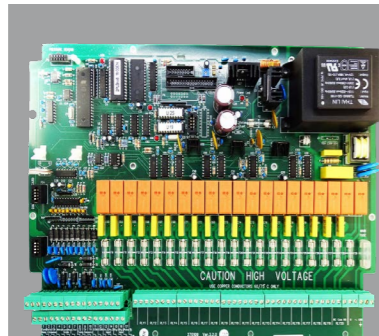
**RLink Wireless Communicator**  
82563235



**Portable Bird Scale**  
80041931



**Main Board**  
85034420



**New AC2000SE Poultry Controller**  
82500100



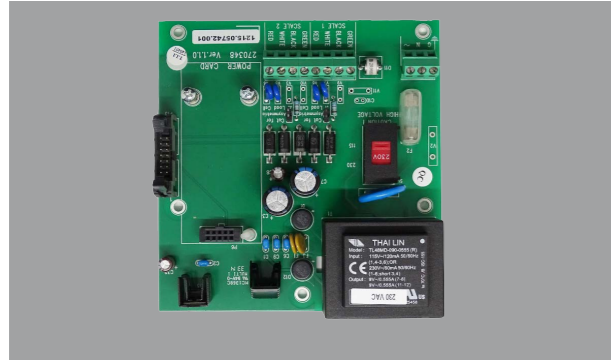


# Rotem Communicator

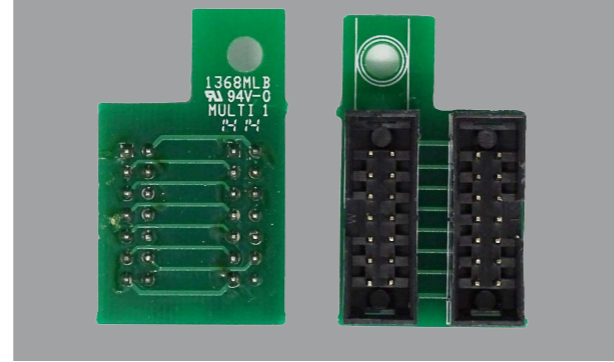
## Control & Management



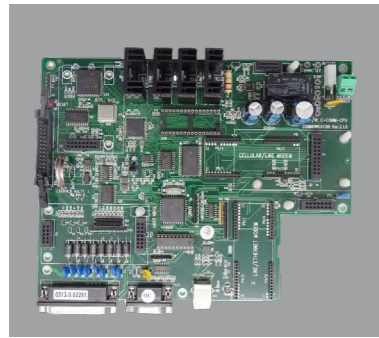
**RSC2SE Power Card**  
85041302



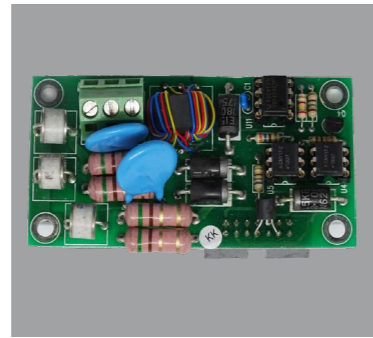
**Communicator LM to CPU Jumper Card**  
85061419



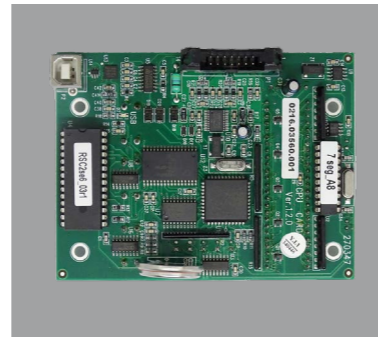
**Communicator CPU Card**  
85061414



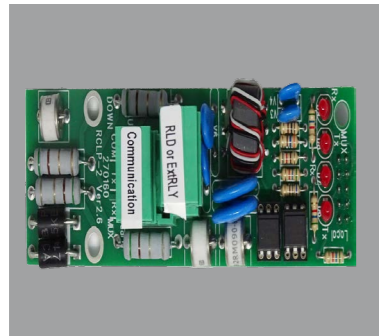
**RF Con. Controller RS232 Card**  
82561925



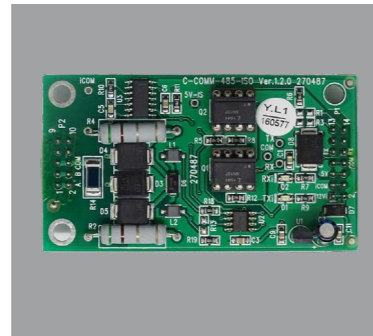
**POU-CPU Card (RSC2SE-L)**  
85041102



**POU-RS232 Card PPRCLP232**  
82561921



**POU-RS485 Isolated Card (Communicator)**  
82561920



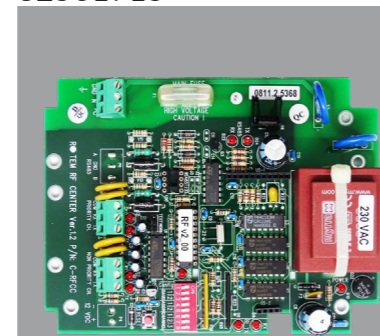
**Communicator Ethernet Set**  
82563222



**Communicator Line Modem Protect Card**  
85061428



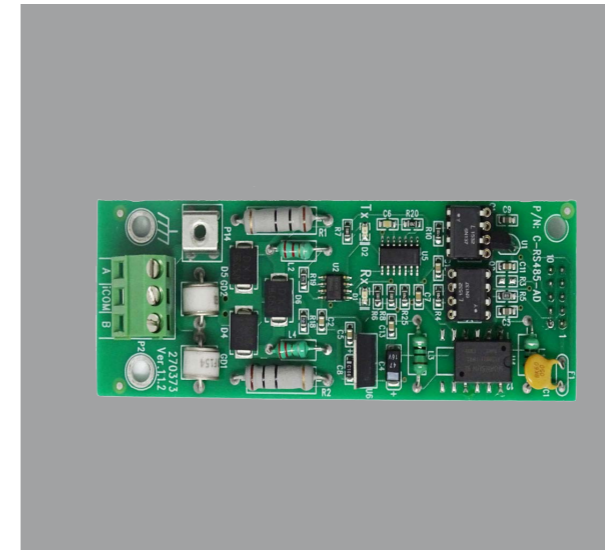
**RF COM. Center Card 230volt**  
82561915



**Rotem Communicator**  
82563220



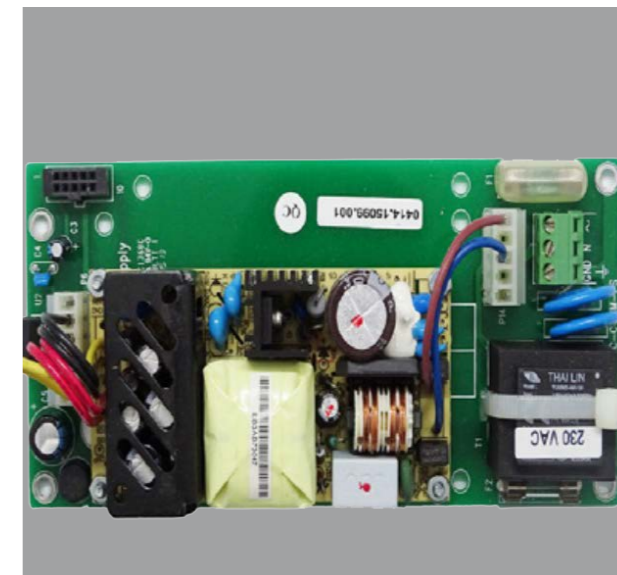
**POU 485 Adapter RS232 AD**  
82561922



**Communicator Battery Pack**  
85061416



**Communicator Power Supply Card**  
85061418





# Rotem Spare Parts

# ROTEM<sup>®</sup>

Control & Management

**Load Cell 30kg  
1042 1/2**  
85042050



**RPBS-1 Load  
Cell 10kg 1022**  
85042030



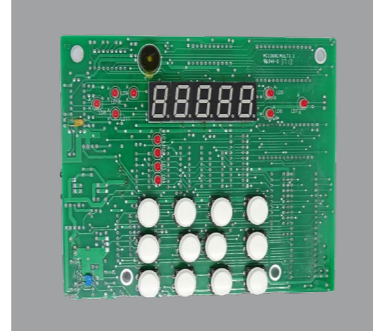
**Power Line Protector 230V  
Controller**  
80023301



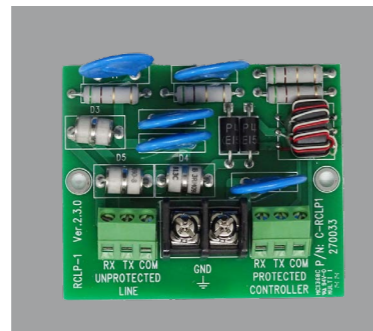
**Rotem CLP Unit**  
80023201u



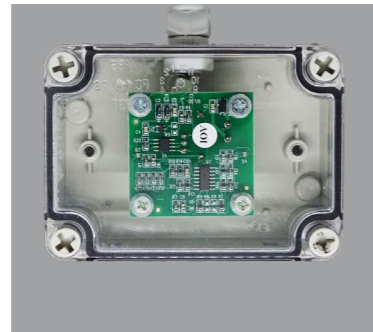
**POU-10kg Card  
RPBS1 (front  
xxx**



**RCLP-1 Card**  
80023201



**Light Sensor**  
80011510



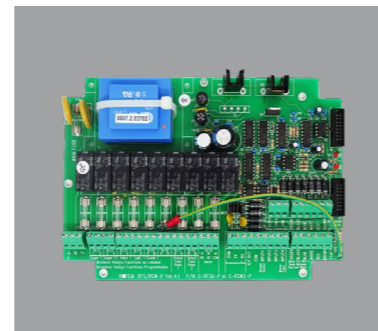
**Mux-Line  
Driver**  
80063544



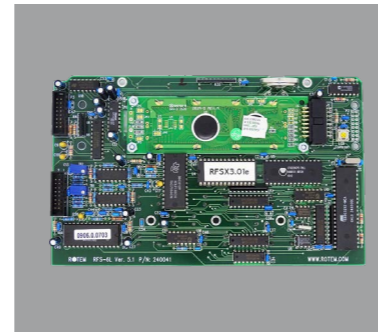
**REB-8 Card  
230v**  
85071408



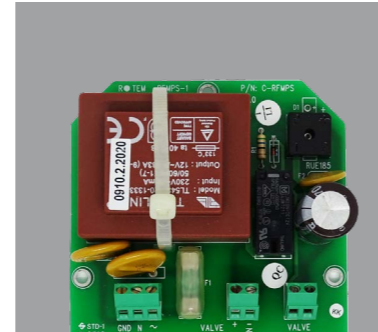
**RFS-6 Power  
Card 230V**  
85031216



**RFS-6 CPU Card**  
85031116



**RCF-1 Motor Power  
Supply Card**  
85031118



**Navigator  
Touch Screen**  
92052418



**Temperature  
Sensor Grey**  
80011001



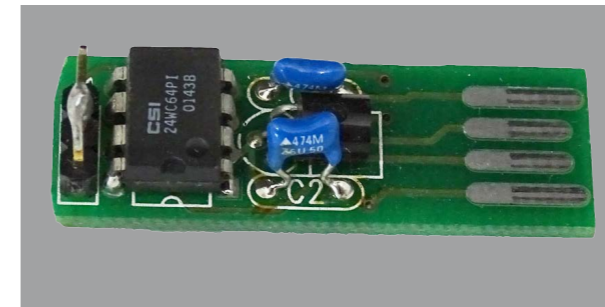
**RHS-10  
Humidity Caps**  
02210016



**Strobe Light**  
92066300



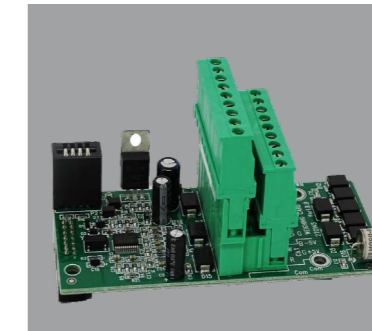
**Feed Scale Data  
Plug**  
85041101



**Permaconn PM45-  
4G**  
106/396B



**Bird Scale Card**  
82500094



**12r Speaker/  
Horn**  
92066655



**Temperature Sensor  
(Black Flex)**  
82511002



**Round Rubber**  
SPR BS RR





# Rotem Smart A&C

**Rotem Smart 4C**  
80030136



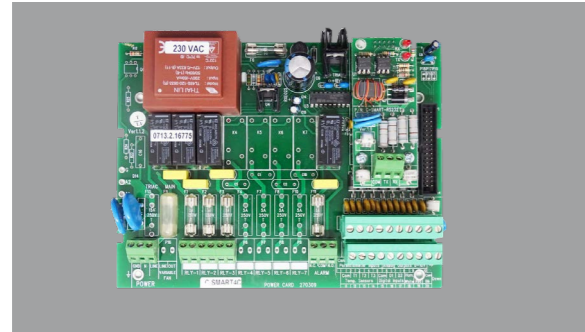
**Rotem Smart 8C**  
80030138



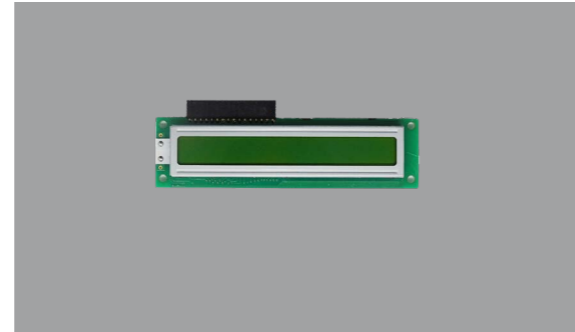
**Smart 4A Controller**  
80030134



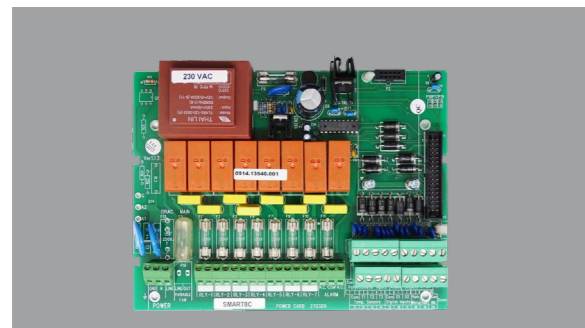
**Smart 4C Power Card**  
85034503



**Smart C Display**  
85034504



**Smart 8C Power Card**  
85034502



**Smart C CPU Card**  
85031104



# Rotem Back Up



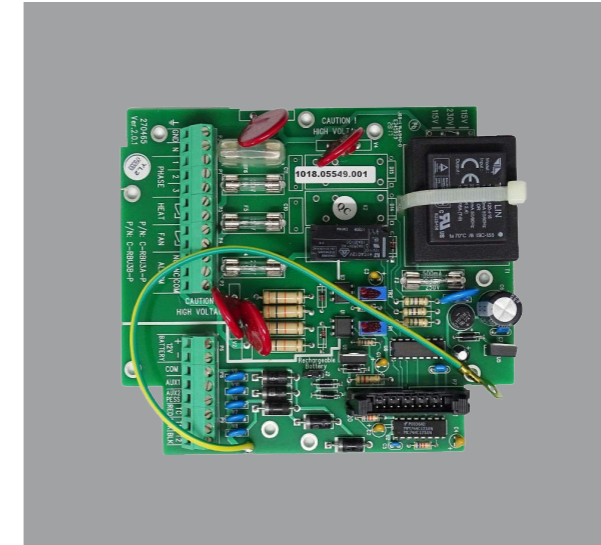
**RBU-3A Backup System**  
80050800



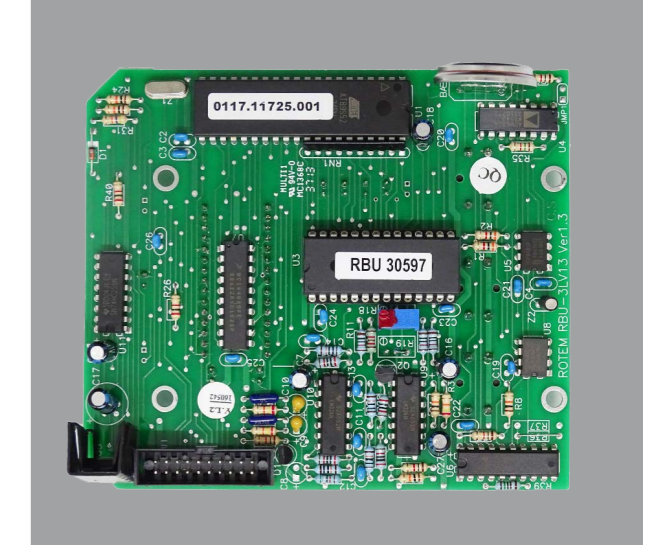
**RBU-3B Backup System**  
80050803



**POU-Power Card 230v (RBU3A-P-V2)**  
85051203



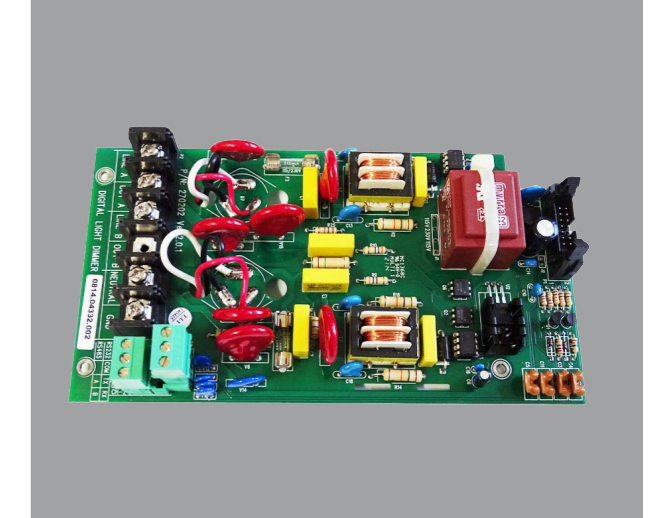
**POU-CPU Card (RBU3-L)**  
85051130



**RBU-3 Sticker**  
85059900



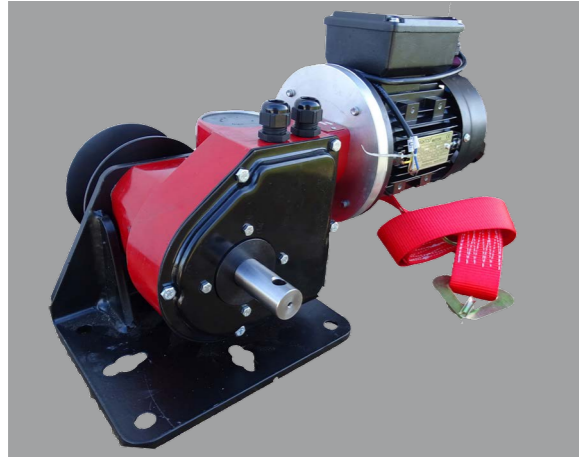
**Card Relay RBU-3B**  
85051230





# Winches

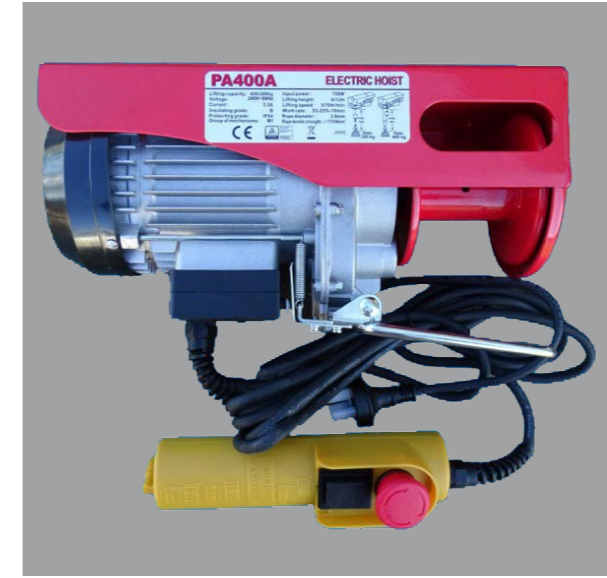
**TSA Red 800 Winch**  
71876130



**Hired Hand PowerTrak**  
6602-1220



**Drinker Winch PA400 (400kgs)**  
71876103



**Feeder Winch PA1000 (1000kg) winch only**  
71876109



**Strap and Drum**  
71876222



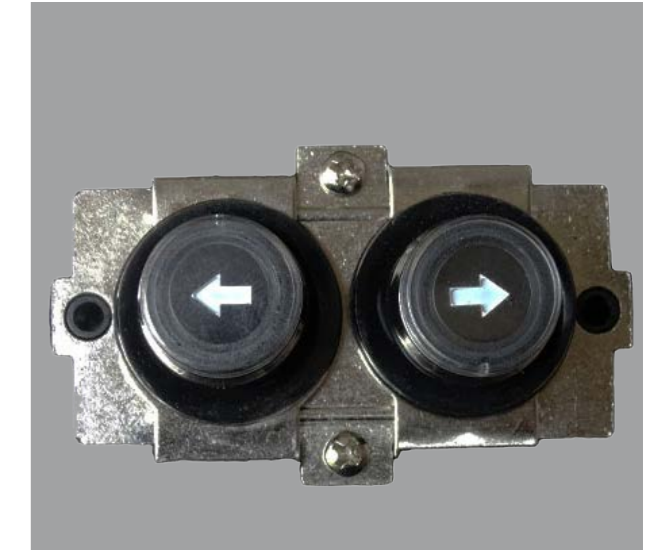
**Drum Only**  
71876224



**PA400 Pendant Only**  
71876111



**PA1000 Switch Only**  
71876113



**Belt/Strap Only 1500mm**  
71876225



**Gearbox Only**  
71876120



**PA400 Switch Only**  
71876114



**PA1000 Pendant Only**  
71876112



**Coupling to Line Drive**  
71876121



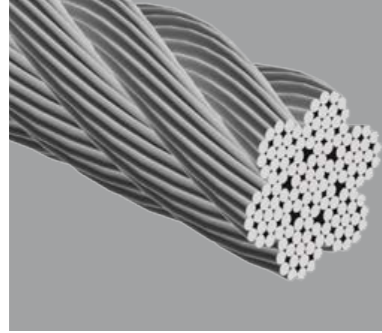
**Mounting Plate**  
71886240



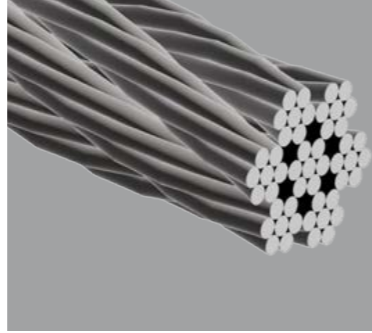


# Suspension Hardware

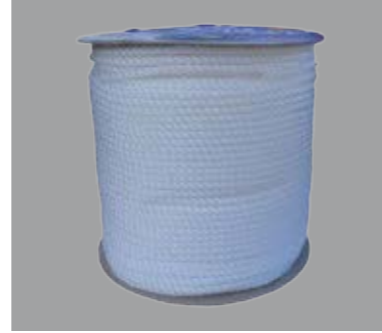
**Strand Cable 7x19**  
3.0mm, 5.0mm, 6.0mm  
93045500



**Strand Cable 7x7**  
1.6mm, 3.0mm, 6.0mm  
93041500



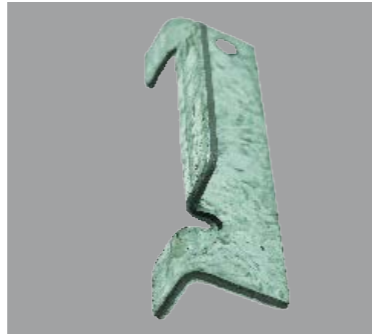
**6mm Silver Cord**  
250m Roll



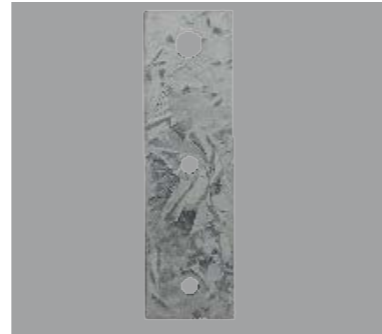
**3mm Nylon Cord - 500m Roll**



**Cable Adjuster 3"**  
HS1903



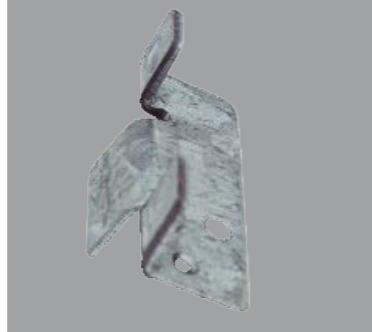
**Cable Adjuster 3" Flat**  
HS1905



**Cable Adjuster 3" C-T**  
HS1904



**Cable Adjuster 2"**  
HS1900



**D-Shackle Locking Pin**  
800-6200kgs  
HM-6360-5004



**D-Shackle Oversized Nut/Cotter Pin**  
1250-23000kgs  
HM-6361-1913



**D-Shackle Collared Pin**  
400-3500kg  
HM-6360-0423



**D-Shackle Standard**  
550-3500kg  
HM-63600-0004



**Eye Bolt Welding Imperial-Metric 1000**  
3500kg  
HM-6319-1416



**D-Shackle Cross Bar w/ Locking Pin**  
1000-2250kg  
HM-6361-1005



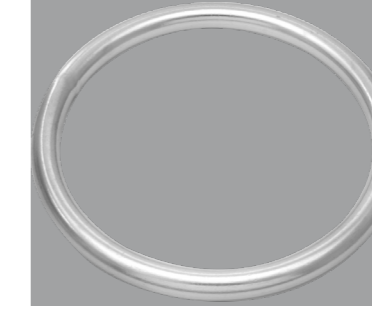
**Swivel Eye/Eye**  
13000kg  
HM-6018-0004



**Snap Hook Open**  
HM-2245-0005



**Ring Round**  
HM-6317-0310



**Swivel Eye/Jaw 1200-10000kgs**  
HM-6018-1006



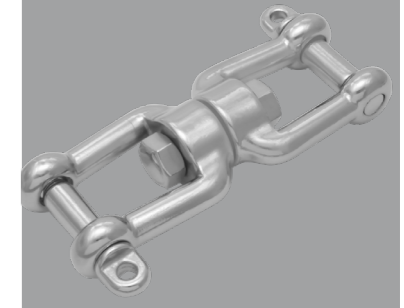
**Spring Snap Hook**  
80-900kgs  
HM-6247-0070



**Ring Dee**  
600-5000kgs  
HM-6325-0315



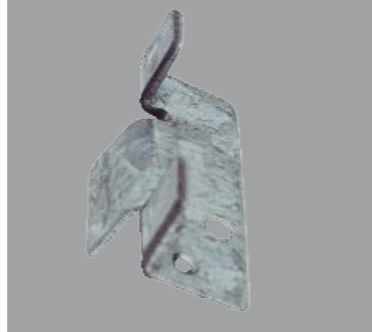
**Swivel Jaw/Jaw**  
1200-10000kgs  
HM-6018-2006



**Cable Adjuster 3" C-T**  
HS1904



**Cable Adjuster 2"**  
HS1900



**D-Shackle Locking Pin**  
800-6200kgs  
HM-6360-5004



**D-Shackle Oversized Nut/Cotter Pin**  
1250-23000kgs  
HM-6361-1913



**D-Shackle Collared Pin**  
400-3500kg  
HM-6360-0423



**D-Shackle Standard**  
550-3500kg  
HM-63600-0004



**Spring Snap Circular Hook Eye End**  
HM-6243-0106



**Ring Round Cross Bar**  
2700-10000kgs  
HM-6317-1630



**Swivel Screw**  
HM-6306-2108



**Ring Triangle 600-2800kgs**  
HM-6325-2335



**Swivel Screw Cross**  
HM-6306-2208



**Spring Snap Circular Hook Open End**  
830-3300kgs  
HM-6243-0206





# Suspension Parts

**Ring Triangle Cross Bar**  
1300-2800kgs  
HM-6325-1545



**Wire Rope Grip**  
Standard  
HM-6260-0014



**Wire Rope Thimbles**  
Standard or Heavy  
HM-6234-0014



**Eye Nuts Retangular Eye**  
HM-6807-0408



**Turnbuckles**  
Eye/Eye with Nut  
Imperial or Metric  
HM-6311-6704



**Eye Bolt Lifting**  
Imperial or Metric  
HM-6307-1012



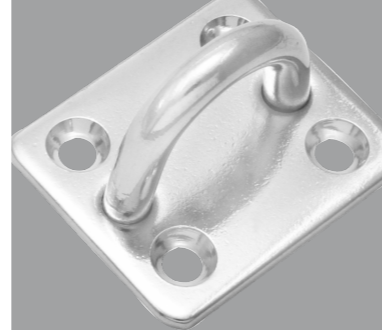
**Eye Plates Oblong Pad**  
700-1600kg  
HM-4321-2005



**Snap Hook Eye End**  
1200kg  
HM-6245-0207



**Eye Plates Square Pad**  
700-1600kgs  
HM-4321-6005



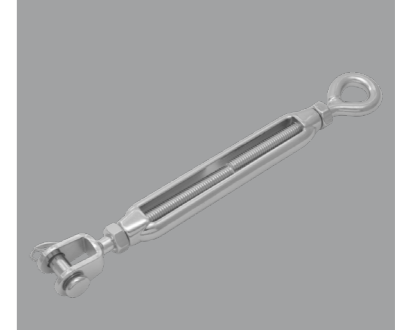
**Eye Bolt ASIS Type**  
Imperial or Metric  
HM-6580-0104



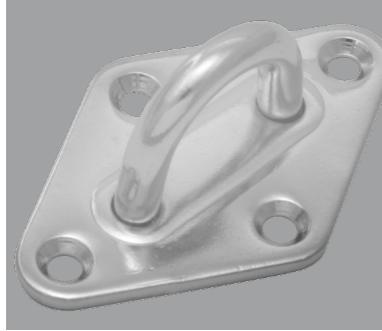
**Turnbuckles Hook**  
/Hook with Nut  
HM-6311-6905



**Turnbuckles Jaw/Eye**  
HM-6311-6205



**Eye Plates Diamond Pad**  
700-1600kgs  
HM-6321-1005



**Eye Bolt Din444**  
Imperial or Metric  
HM-2444-2490



**Eye Nuts ASIS Type**  
Imperial or Metric  
HM-6582-1104



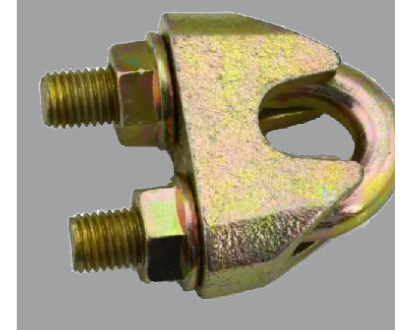
**Eye Bolt SUS Type**  
Imperial or Metric  
HM-6306-0104



**Turnbuckles Jaw/Jaw**  
Imperial or Metric  
HM-6311-6405



**5mm Wire Rope**  
Clamp  
DIN1142



**Eye Bolt-Screw**  
Eye-Wood Screw  
HM-2318-2445



**Eye Bolt-Screw**  
Eye-Collard  
HM-6329-1550



**Spring Snap Hook**  
G304  
HM-4247-1065



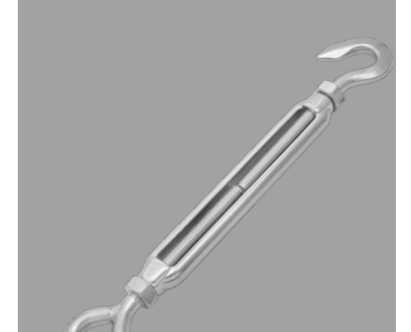
**D-Shackle**  
Hexagonal Sink Pin  
HM-6360-4005



**Galvanised Jaw/Jaw**  
Rigging Screw  
G220008



**Turnbuckles Hook/**  
Eye with Nut  
HM-6312-3205



# Pulleys

**3.5" Red Cast Iron**  
HS118351



**3.5" Fiberglass Pulley**  
71742300



**1 -7/8 "Swivel**  
HS118170



**2.5" Steel Pulley**  
HS118254



**3.5" Cast Iron with Bearing**  
HS118354



**3.5" Cast Iron w/ Grease Nipple**  
85031116



**1.5" Steel Pulley**  
HS118151



**1-7/8" Nylon Swivel Pulley**  
HS118171



**7/8" Pulley Stainless Steel Housing**  
HS118078



# Tools

**Cable Cutters**

- 71901200 - Hit6mm
- 71901300 - Hit 16mm
- 71901400 - Felco 5mm
- 71901409 - Felco 9mm



**Hygrometer (thermo)**  
71903001



**Kestrel 2000 Wind & Temp Meter**  
71902000



**Kestrel 3000 Wind & Temp / Humidity Meter**  
71903000





# Evaporative Cooling Pads

**1800mm x 600mm x 150mm**

45/15 Deg Flutes

Non-Coated | Coated  
92021509 | 92021508



**1830mm x 600mm x 150mm**

45/15 Deg Flutes |

Non-Coated | Coated  
92021530c | 9202153

**2000mm x 600mm x 150mm**

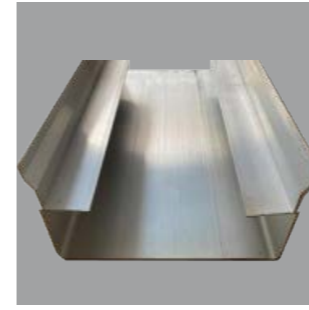
45/15 Deg Flutes |

Non-Coated | Coated  
92021510 | 92021512

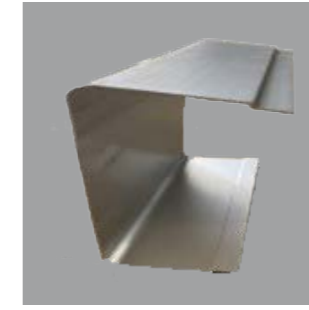
**Water Disperse Pad  
30mm (Loose)**  
92021511



**Channel Top and bottom  
5m length**  
51600100



**Frame Joiner**  
51600115



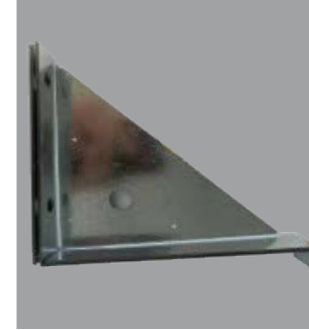
**End Frame/Casing-2m**  
51600110



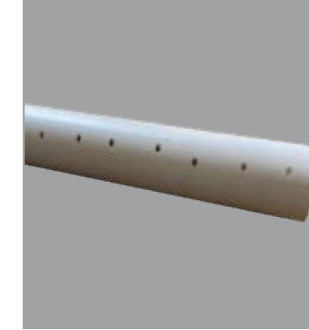
**Cover Plate - 5m**  
51600112



**Frame Support Bracket**  
51600105



**Spray Bar/Pipe - 4m**  
51600200



**Water,Supply Pipe 25mm,  
4m length**  
92037525



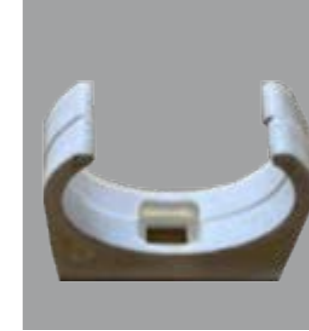
**End Cap**  
51600220



**Screw Thread Cover**  
51600225



**Pipe Support Bracket**  
51600215



**End Plates/Covers,  
metal**  
51600120



**Spray Bar Joiners,  
32mm**  
51612550



**Water Outlet  
Flange**  
51600210



**Spray Bar "T", 32mm**  
51612250



**Spray Bar Elbow,  
32mm**  
51611650



**Flushing Ball Valve  
Tap, 32mm**  
51614250



**Flushing Filter  
1-1/2" BSPF**  
42001150



**Pump, Grundfos  
AP12.40.08.1**  
51068312



**Sump, 450L Heavy  
Duty Plastic**  
71410045



**Lid for Sump HEAVY  
DUTY AL**  
71410040



# Fogging Nozzles and Accessories

V Jet HB 1/8" Nozzle 65-015

71111007



V Jet HB 1/8" 40-045

71111006



Anti-Drip Adaptor

71122000



Nozzle - 414

71111414



Brass Fogger Nozzle Adaptor (1/8"-10/24")

MC-AB1/8-10/24



Nozzle - Fog system Skov

71172424



Nozzle Anti-Drip - 206

71111206



Pressure Regulator

PRU8460



Blank Nozzle

71111000



O Ring

71131000



Nozzle Anti- Drip 304

71111304



Filter Adaptor

71123000



Filter

71113000





# EZY Fogger Pipe Low Pressure (300psi)

Nylon Tube, EZY FOGGER, 12mm, Low Pressure

71205301-(300psi, 250m Rolls)



Clamp, EZY FOGGER, (1000psi), 1 or 2 Nozzles, c/w O'rings

71204001 - (Surface mounted or Wire supported)



Connector, EZY FOGGER, Straight, Low Pressure

71203010



Connector, EZY FOGGER, End, Low Pressure, c/w cap

71203015



Connector 1/4" BSPM, Low Pressure

71203020



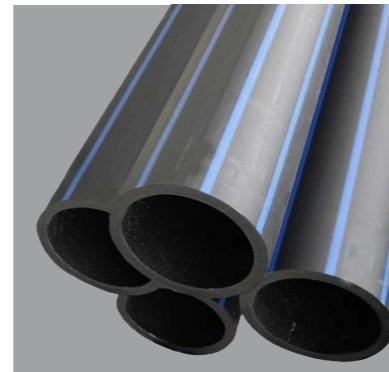
Connector 1/2" BSPM, Low Pressure

71203020



Pipe, Blue Stripe Poly Supply Line 16MMD

71205005



# EZY Fogger Pipe High Pressure (1000psi)

Nylon Tube, EZY FOGGER, 12/6 mm, High Pressure

71205301 - (1000psi, 250m rolls)



Clamp, EZY FOGGER, (1000psi), 1 or 2 Nozzles, incl O'rings

71204001



Connector, EZY FOGGER, Straight, High Pressure

71205010



Cap, EZY FOGGER, End, High Pressure

71205015



Connector 1/4" BSPM, High Pressure

71205020



Connector 1/2" BSPM, High Pressure

71205012



Equal "T" 12mm Quick-Fit

71121012



Ball Valve 1/2" FMBV12

71424231



Ball Valve 1/4" FMBV6

71424211

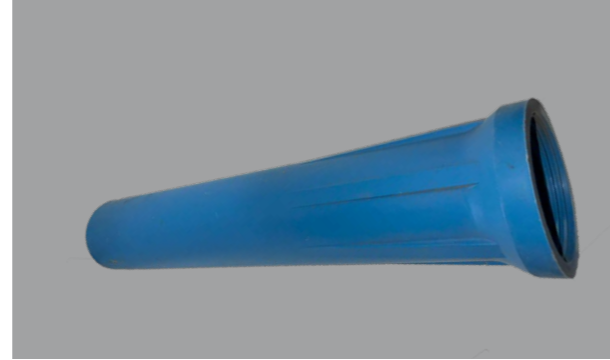


# Filter Housings and Cartridges

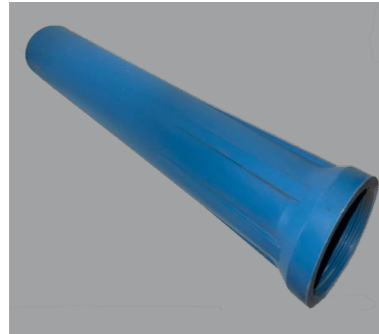
**Polypropylene Housing (10") - 3/4" Inlet/Outlet (125psi)**  
71011110



**Polypropylene Housing (20") - 3/4" Inlet/Outlet (125psi)**  
71011210



**Polypropylene Housing (20") - 1" Inlet/Outlet (125psi) "JUMBO"**  
71011220



**Stainless Steel Housing (10") - 3/4 Inlet/Outlet (300psi)**  
SH3410



**Stainless Steel Housing (20") - 3/4 Inlet/Outlet (300psi)**  
71013220



**Filter Cartridge (10") - 10um (standard cartridge)**  
PS10



**Filter Cartridge (20") - 10um (standard cartridge)**  
71030210



**O-Ring Filter (IBC)**  
71030300



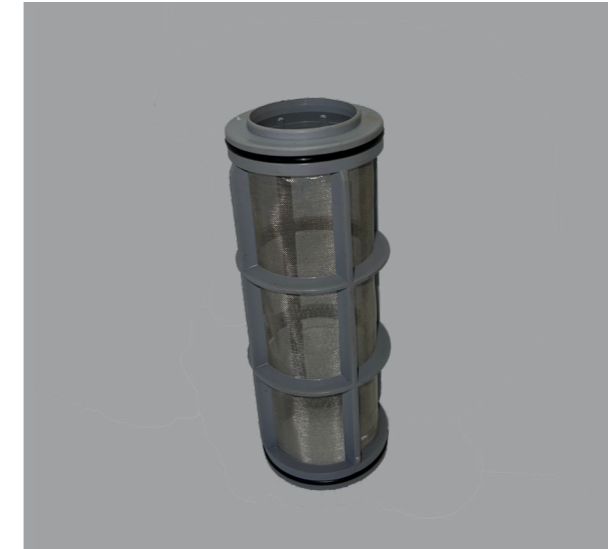
**O-Ring to suit 20" Housing (CUNO)**  
71030305



**Filter Cartridge (20") - 5um (large diameter)**  
71030212



**Flushing Filter (Drinkers) 1-1/4 c/w Reducing Bush, plastic**  
42001155



**Flushing Filter (Cool Pads) 1-1/2" c/w Reducing Bush**  
42001160



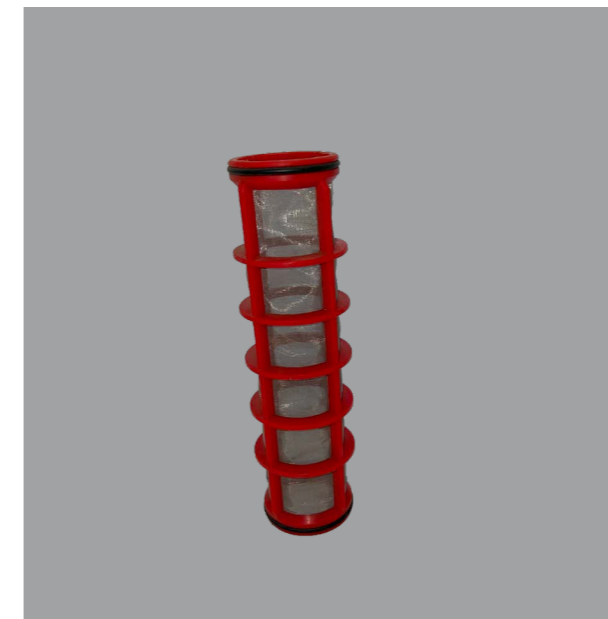
**Housing, Flushing Filter (Drinkers) 1-1/2" ONLY**  
42001150



**Housing, Flushing Filter (Cool Pads) 1-1/2" ONLY (30mesh)**  
42001151



**Cartridge, Flushing Filter, (Drinkers) 100mesh (Red)**  
42001152



**Cartridge, Flushing Filter, (Cool Pads) 30mesh (White)**  
42001153





# Dosing Pumps and Accessories

**D3RE2**

45013116



Mix Rite #12502, Medicator

**D8R Dosatron**

45013008



**Chemical Injector**  
1L Bottle - 91040600  
15L Drum - 91040017

**Dosing Pump Assembly c/w Install Kit, Grundfoss**

45030020

45012502



**Chemical Injector 275kg DRUM 200L**

91040200

**Odour Control Solution**  
1L bottle - 91030701  
15L Cube - 91030715  
200L - 71030300

**"Bio-Strip" Algae Control, Cool Pad Water, Per Stick**

91045010

**"Bio-Strip" Descaler, Cool Pad water, Per Stick**

91045020

**Dosing Pump Only, DM1-B1-10**

45030010

**Install Kit for Dosing Pump**

45030011



# Pressure Washers *Aussie Pumps*

**Engine Drive Ag Sprayer Pump**

XX



**Electric Steam Cleaner 15000psi**

71876222

**Wash & Flush**

71876224



**Super Scud Direct Drive Cold Water Blaster 3000psi**

17876225

**Electric Cold Water Blaster 3000-4000psi**

71876120



**Quik Prime Petrol Drive Firefighting Pump**

71876121

**Engine Drive Heatwave Steam Cleaner 4000psi**

71886240



# L.B White Heating



## Control Model

55006235



## Transformer AB230

55011045



## Kit RetroFit 230v Nitride Igniter

573764



## Gas Control Valve Conversion Kit

55009688



## AB230 Natural Gas Valve Gas Control

55010288



## Valve Gas Control AW230

55010287



## Thermostat

55003019



## Igniter ABX200

55005426



## Igniter AW230

55050748



## Transformer AW230

55011659



## Sail, Air Flow AW230

55011035



## Valve Gas Control LPG AW230

55010336



## LB White Guardian Forced Air Heater

AB250 (AB230) 55001232  
AW250 (AW230) 55001237

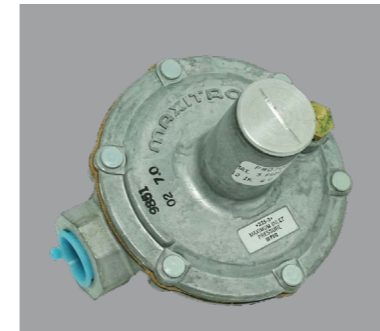
## Thermocouple AB230

55008196



## Vent Filter Kit

55009820



## Kit, Shield Pilot with Burner tip Assy

55020128



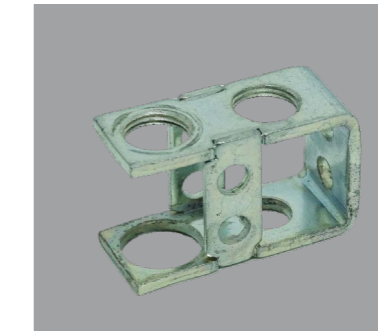
## Air Flow Switch

55011680



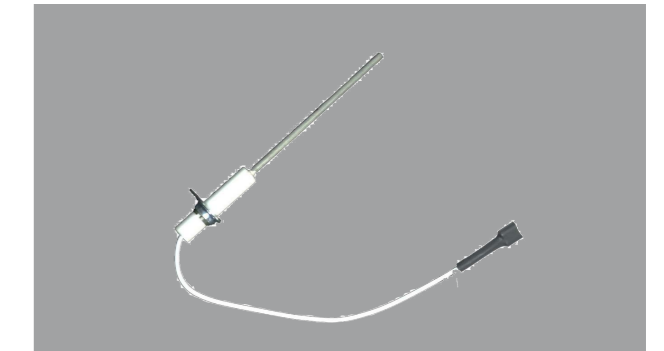
## Bracket, Pilot Burner

55007831



## Flame Sensor AW230

55007230



## Reducing Brush

55015113



## Sediment Trap

55010815





# Hired Hand Heaters



**Hired-Hand® Super Saver XL™**  
225,000 BTU Heater - LP  
6601-7024

**Heater  
Installation Kit**  
6450-0200



**High Limit Thermo-Disc**  
320F (160C)  
3005-0107



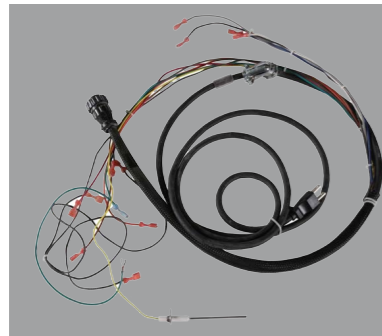
**1/2 Pipe Plug**  
1021-1496



**Thermostat**  
3005-2130



**Lg Heater Wiring  
Harness**  
1903-2688



**1.25 Flame Sense Probe**  
3003-5010



**Blower Wheel**  
6401-1318



**Orifice-Natural Gas**  
0409-3006



**Motor, 1/3Hp,230v**  
3016-3076



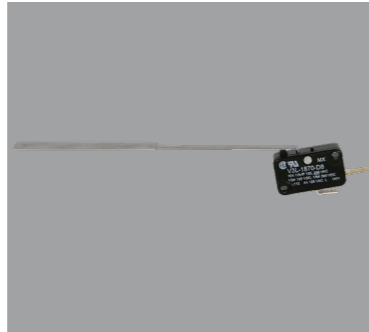
**Gas Valve Natural Gas**  
3004-0101



**Single-Pole Throw  
(On/Off)**  
3001-2862



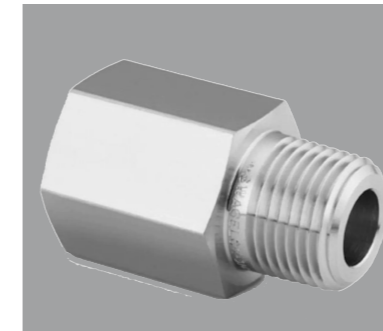
**Sail Switch**  
3001-1740



**Blower Wheel Assembly**  
6401-5036



**CE Heaer BSPP Adapter**  
0409-4537



**Gas Regulator LPG**  
1045-0100



**Gas Valve LP Gas**  
3004-0100



**Burner Plate**  
6401-1309



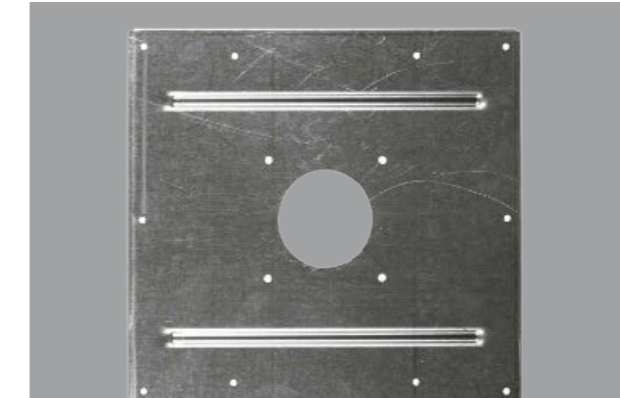
**Low Pressure Gas  
Switch**  
3001-0111



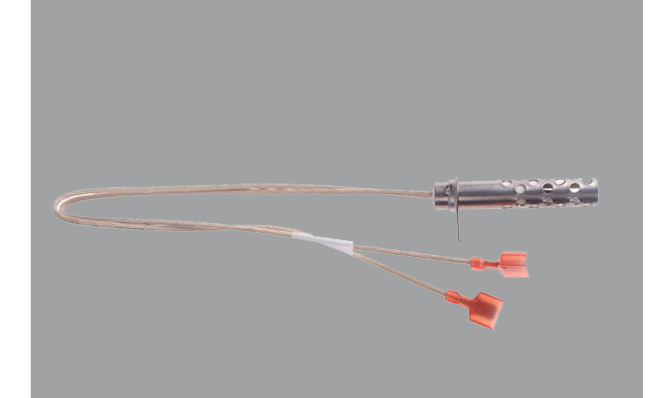
**Orifice - Propane**  
0409-3002



**Motor Mount**  
0408-1131



**24V Igniter Used For 230V, 50/60Hz**  
3002-5001



# Sunbird Lighting

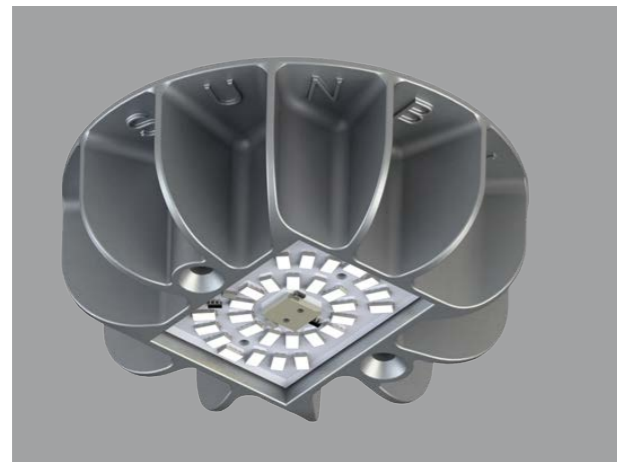


# Hontech-wins

# LED Lighting

## 5/10w Luminaire AG0301 | AG0302

The SUNBIRD® LED 10W Luminaire offers an impressive 160 lumen per watt with a colour temperature of either 2700°K or 5000°K.



## Dimmer



## 3w Aviary Light SB3WV6

The SUNBIRD® 3W Aviary Light has been designed as a robust and highly effective alternative to strip or rope lighting for Aviary systems.



## Control Gear



## AC Dimming System 4500w iDimmer 4L HT-DIM-045L



## AC Dimming System 3000w iDimmer 3L HT-DIM-030L



## LED Tube Light

25W HT-T12AC25W12FD  
30W HT-T12AC30W15FD  
35W HT-T12AC35W18FD



## Broiler LED Light

7W HT-QPF07WS  
10W HT-QPF10WS  
15W HT-QPF15WS



## Electrical Cable

14AWG | 1.0mm<sup>2</sup> | 3.2A | 800w  
16AWG | 1.0mm<sup>2</sup> | 5.2A | 1000w  
18AWG | 0.75mm<sup>2</sup> | 5.2A | 1500w





# Coolair Fans



**Belt to suit 36" Fan (A58)**

97508158

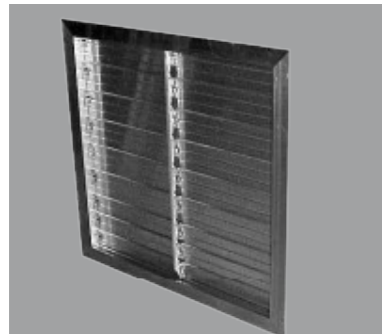


**Slope Wall Housing (54" square) c/w Hard-**  
51020054



**Aluminium Shutters (54" square)**

51030054



**Fan Hub - 36" c/w Shaft & Bearings**

51060036



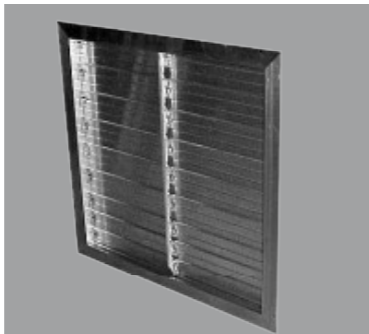
**Belt to suit 54" Fan (A75)**

97508175



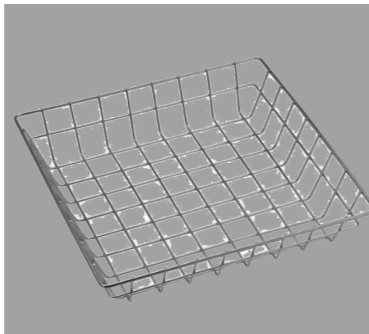
**Aluminium Shutters (36" square)**

51030036



**Square Guard - 36" c/w Hardware kit**

51040036



**Fan Hub - 54" c/w Shaft & Bearings**

51060054



**Slope Wall Housing (36" square) c/w**  
51020036



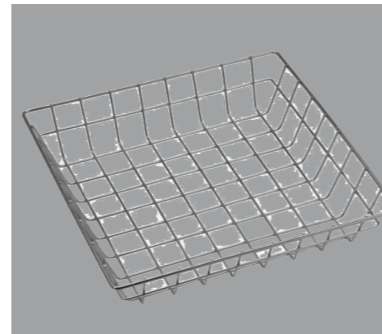
**Aluminium "FES" Shutter (54")**

51030052



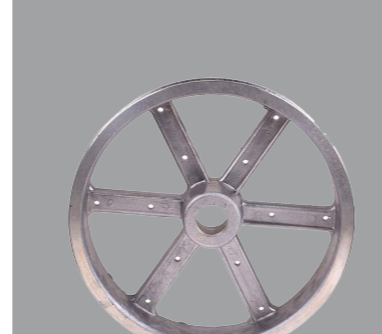
**Square Guard - 54" c/w Hardware kit**

51040054



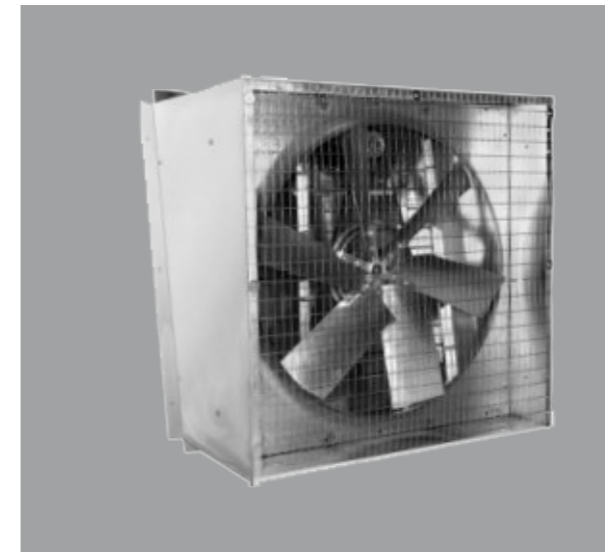
**Pulleys (all models) TAPER-LOCK**

51070050



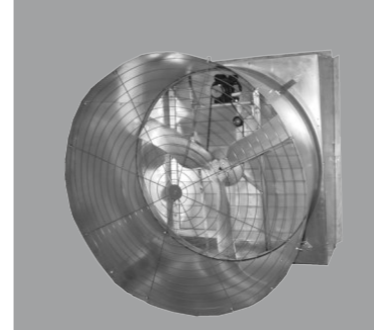
**NCF Fan Complete (36")**

51012136



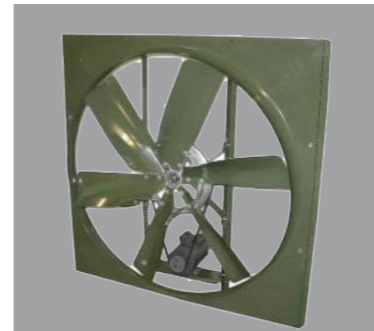
**MNBCCE 54L, HI Efficiency tunnel Fan**

51011654



**NBF Fan - 54" (29,000 CFM approx) No Motor**

51011054



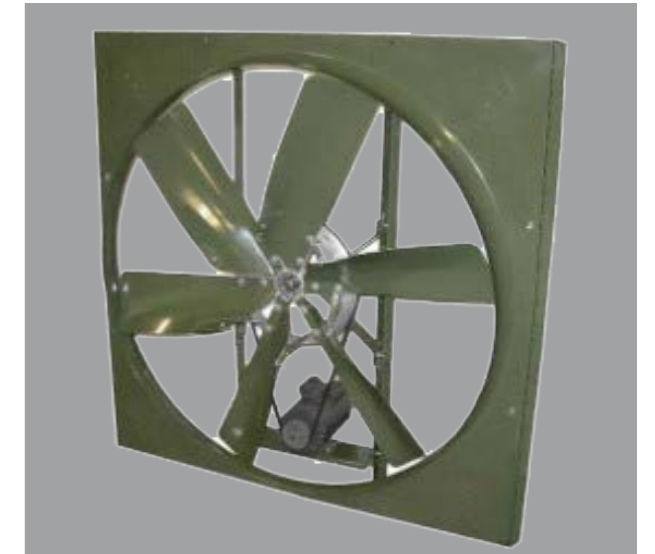
**Bearings to suit 36" Fan (6203DD)**

51065005



**NBF Fan Complete (54") 1.5HP, 3PH**

51011854



**Hanging Fan - 36" sq. c/w guards and hardware kits | 3 phase**

51014536



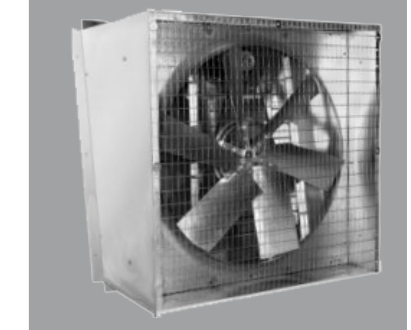
**Blades 36" Fan Pair**

51062036



**NCF Fan - 36" Dia (11,500 CFM approx) No Motor**

51012036



**Blades 54" Fan Pair**

51062054



**Bearings to suit 54" Fan (6205DD)**

51065004





# Euro Fans

## 1 V Belt

Fen 88  
Fen 89

## 2 Centrifugal System

51531001

## 3 Linkage Plate

51531036

## 4 Central Bearing Only

51501253

## 5 Motor Base Plate

36" 51501252  
50" 51501251

## 6 Central Pulley w/ Bearing Assy

50" and 36"  
51561014



## 7 Box Fan

50" 51501200  
36" 51502205



## 8 50" Fan

With Cone 51502200  
Without Cone 51501200  
Light Trap 51501220



## 9 Butterfly Cone Fan



## 10 Blades

50" 51561001



# Motors

**1** 0.75kw Motor  
1PH

TA4A0754TML

**2** 1.1kw 3Phase with  
reducer

**3** Cross Auger Motor .75kw  
3PH 19mm Shaft

0.55kw Feedline  
Motor 3PH

TA4A0554TAI

**4** Feedline Motor  
0.37kw 3PH

51050502

**6** 0.37 1PH Feedline  
Motor

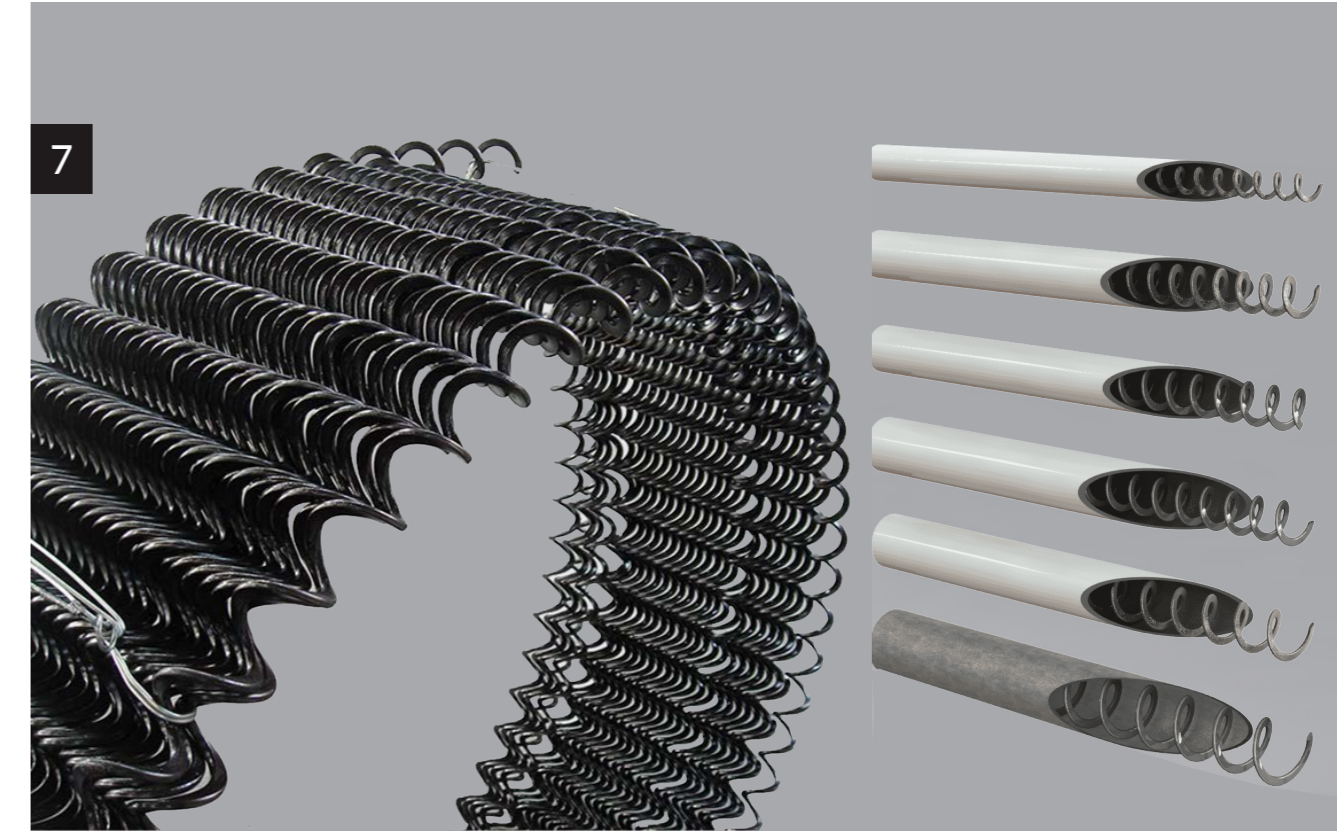
51050100

**5** Motor 1Ph 1HP  
5/8" Shaft

5/8" Shaft - CWC4011C  
1/2" Shaft - CWC3910C

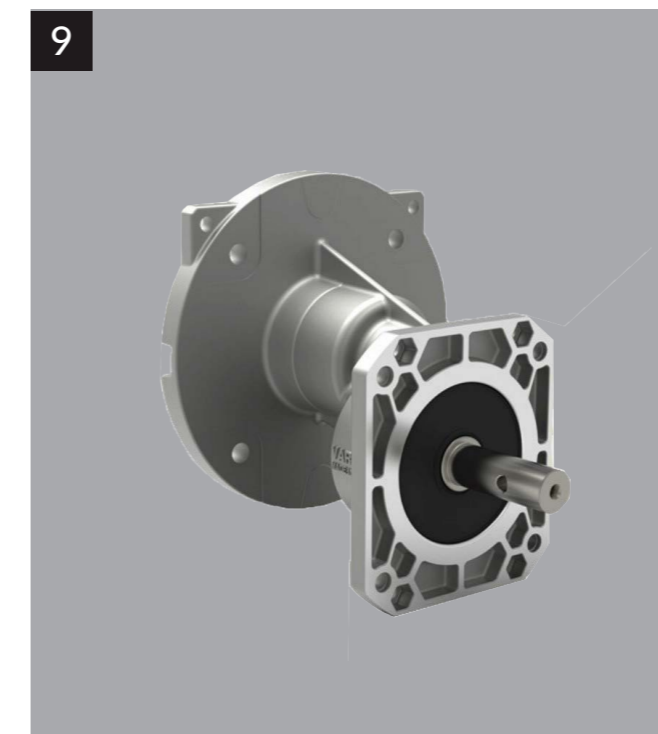


# Augers



**7** Roxell FA55,75,90 | Big Dutchman FlexVey 75,90,125

# Gearboxes



**9** Varvel Gearboxes  
TRP68000390805



**10** VGA Coupler for Varvel Gearbox  
VGA19 | VGA 24

# Minimum Ventilation

**TSA Mini Vent**  
TNNVLNE



**PTN Mini Vent, Hood Light Trap**  
PTN Vent Spring Long (no



**PTN Vent Spring Short**  
PTNVS



**PTN Vent Spring Long**  
PTNVL



**Operating Rod for "TSA" Air Inlet, 4m c/w joining**  
92045506



**Light Trap for "TSA" Air Inlet**  
92045512



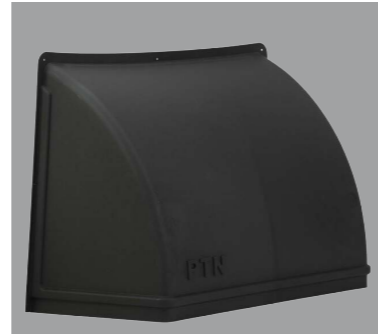
**TSA Air Inlet black plastic 550 x 260mm**  
92045510



**Air Inlet 50" | PTN 50**  
92045504



**Weather Cover, for PTN 600 Air Inlet**  
92045507



**Light Trap, for PTN 600 Air Inlet**  
92045508



**Air Inlet, Black Plastic PTN 600**  
92045509



# Miscellaneous

**TSA Rait Bait Stations**  
RBS



**Surefire Rodenticide Blocks 8kg**

SRB



**Ratal Rodenticide Pellets 10kg**

92095010



**Bird Chick Paper**

- 92015143 - (900mm x 1400m Roll)
- 92015144 - (1200mm x 1400m Roll)
- 92015145 - (1500mm x 1400m Roll)
- 92015146 - (1400mm wide x 1400m Roll)





# Contact Us.

**Rob Finch | Sales**

☎ 0499 085 820

✉ rob@tsa.tech

☎ (07) 5429 2028

✉ reception@tsa.tech

🌐 www.tsa.tech

**Scott Miller | Director - Sales**

☎ 0424 413 484

✉ scotty@tsa.tech

📍 159-161 Burke Road, Donnybrook  
QLD 4510, Australia